

Norton

REGD. TRADE MARK

SPARE PARTS LIST for 1964

Models

88ss, 650ss, 650/99 & Atlas

also covers

GI5P "N" GI5CS "N"

GI5P "M" GI5CS "M"

Price

NORTON MOTORS LTD.

PLUMSTEAD ROAD

WOOLWICH, LONDON S.E. 18



SPARE PARTS LIST for 1964

Models

88ss, 650ss, 650/99 & Atlas

also covers

G15P "N" G15CS "N"

G15P "M" G15CS "M"

NORTON MOTORS LTD.

PLUMSTEAD ROAD

WOOLWICH, LONDON S.E. 18

INDEX

| A | | | | | Page | | | | | | Page |
|----------------------------------|-----|-----|-----|-----|------|---------------------------------|-----|-----|-----|-----|---------|
| Air cleaner | ... | ... | ... | ... | 50 | Head steady stay | ... | ... | ... | ... | 11 |
| Air lever | ... | ... | ... | ... | 31 | Horn | ... | ... | ... | ... | 45 |
| Alternator | ... | ... | ... | ... | 46 | I | | | | | |
| Ammeter | ... | ... | ... | ... | 45 | Inflator | ... | ... | ... | ... | 48 |
| Axle sprocket | ... | ... | ... | ... | 18 | K | | | | | |
| B | | | | | | Kickstarter | ... | ... | ... | ... | 21 |
| Battery | ... | ... | ... | ... | 46 | Knee grips | ... | ... | ... | ... | 34 |
| Battery box and mounting | ... | ... | ... | ... | 39 | M | | | | | |
| Big end bearing | ... | ... | ... | ... | 18 | Main bearings | ... | ... | ... | ... | 9 |
| Brake lever | ... | ... | ... | ... | 31 | Mudguards, front and rear | ... | ... | ... | ... | 28 & 30 |
| Brake pedal | ... | ... | ... | ... | 43 | N | | | | | |
| C | | | | | | Number plates | ... | ... | ... | ... | 30 |
| Cable clip | ... | ... | ... | ... | 32 | O | | | | | |
| Camshaft bushes | ... | ... | ... | ... | 6 | Oil pump | ... | ... | ... | ... | 10 |
| Carburettor | ... | ... | ... | ... | 13 | Oil tanks and pipes | ... | ... | ... | ... | 33 & 35 |
| Centre stand | ... | ... | ... | ... | 24 | Optional equipment | ... | ... | ... | ... | 50 |
| Chains | ... | ... | ... | ... | 17 | P | | | | | |
| Clutch | ... | ... | ... | ... | 20 | Petrol tank | ... | ... | ... | ... | 34 |
| Clutch lever | ... | ... | ... | ... | 32 | Pillion footrests | ... | ... | ... | ... | 36 |
| Connecting rods | ... | ... | ... | ... | 5 | Pistons and rings | ... | ... | ... | ... | 7 |
| Control cables | ... | ... | ... | ... | 33 | Power unit fixing studs | ... | ... | ... | ... | 5 |
| Crankcase fittings | ... | ... | ... | ... | 5 | Pressure release valve | ... | ... | ... | ... | 6 |
| Crankshaft | ... | ... | ... | ... | 5 | Push rods | ... | ... | ... | ... | 9 |
| Crash bars | ... | ... | ... | ... | 48 | R | | | | | |
| Crown and column | ... | ... | ... | ... | 28 | Rear chaincase | ... | ... | ... | ... | 38 |
| Cylinder, cylinder head | ... | ... | ... | ... | 6 | Rear chainguard | ... | ... | ... | ... | 37 |
| D | | | | | | Rear suspension | ... | ... | ... | ... | 24 |
| Dualseat | ... | ... | ... | ... | 33 | Rear wheels | ... | ... | ... | ... | 42 |
| E | | | | | | Rectifier | ... | ... | ... | ... | 46 |
| Electrical equipment | ... | ... | ... | ... | 47 | Rockers and rocker covers | ... | ... | ... | ... | 10 |
| Engine | ... | ... | ... | ... | 5 | Rotor | ... | ... | ... | ... | 46 |
| Engine sprocket | ... | ... | ... | ... | 12 | Revolution counter and fittings | ... | ... | ... | ... | 49 |
| Exhaust pipe | ... | ... | ... | ... | 15 | S | | | | | |
| F | | | | | | Shock absorbers | ... | ... | ... | ... | 24 |
| Footchange | ... | ... | ... | ... | 18 | Side prop stand | ... | ... | ... | ... | 25 |
| Footrests | ... | ... | ... | ... | 25 | Silencers | ... | ... | ... | ... | 15 |
| Frames | ... | ... | ... | ... | 21 | Sparking plugs and covers | ... | ... | ... | ... | 47 |
| Front chaincase, inner and outer | ... | ... | ... | ... | 36 | Speedometers | ... | ... | ... | ... | 44 |
| Front forks | ... | ... | ... | ... | 27 | Stator <i>E. Housing</i> | ... | ... | ... | ... | 11 |
| Front wheels | ... | ... | ... | ... | 40 | Stop and tail lamp | ... | ... | ... | ... | 45 |
| G | | | | | | Swinging arm | ... | ... | ... | ... | 22 |
| Gasket sets | ... | ... | ... | ... | 48 | T | | | | | |
| Gearbox | ... | ... | ... | ... | 17 | Tappets | ... | ... | ... | ... | 9 |
| Gudgeon pin | ... | ... | ... | ... | 8 | Timing cover | ... | ... | ... | ... | 6 |
| H | | | | | | Timing gear | ... | ... | ... | ... | 9 |
| Half time pinion | ... | ... | ... | ... | 9 | Tools | ... | ... | ... | ... | 47 |
| Handlebars and controls | ... | ... | ... | ... | 31 | Tool tray | ... | ... | ... | ... | 38 |
| Headlamps | ... | ... | ... | ... | 31 | Twist grip | ... | ... | ... | ... | 32 |
| | | | | | 114 | V | | | | | |
| | | | | | | Valves, guides, springs, etc. | ... | ... | ... | ... | 7 |

INSTRUCTIONS FOR ORDERING SPARE PARTS

It is most essential that the Engine and Frame Number of the machine is stated. The Engine Number is to be found on the transmission side of the Crankcase directly below cylinder base. The frame number is stamped on the nearside of the frame gusset plate on all models. It is always advisable to order parts on a separate sheet, and not to include on the same sheet other matter of a different nature; this facilitates prompt despatch.

It is found in a number of instances that money orders and postal orders are sent in parcels containing patterns; this is inadvisable. We strongly recommend parts as patterns being despatched separately, and a covering letter sent containing the remittance for replacement parts.

RETURNING MACHINES FOR OVERHAULING

When returning machines or parts for repair or overhaul, these should be sent carriage paid, and with the sender's name and address in full, securely attached. It is also advisable to state on the tally that a letter has been sent respecting the parts, and giving the date. All easily detached fittings should be removed, such as Lamps, Horns, Tool Bags, Speedometers, etc.; these are liable to be lost or damaged in transit, and the Company cannot accept any responsibility for them.

ESTIMATES FOR REPAIRING MACHINES

We are always prepared to give approximate estimates for the cost of repairs; it is quite impossible to give a firm quotation. Additional parts may be found necessary during the process of repair, unforeseen when preparing an estimate. Should our estimate for repair not be accepted, a charge may be made in accordance with work entailed in dismantling and re-assembling. When we give an estimate for cost of repairs, and this is curtailed by the owner, we cannot accept any responsibility for the performance of the machine; it is always preferable to accept our estimate in full.

PURCHASE OF SPARE PARTS

Norton Dealers throughout the British Isles generally carry a very comprehensive stock of Norton spare parts and it is recommended that owners should obtain any spare parts required through them.

The name of the nearest Norton dealer will be supplied on request and if any difficulty whatever is experienced in obtaining spare parts through a Norton Dealer, if we are advised, we shall be very pleased to investigate the matter.

It is our desire that replacement parts are available to Norton owners with the least possible delay.

Please note we reserve the right to alter the prices in the list at any time without notice.

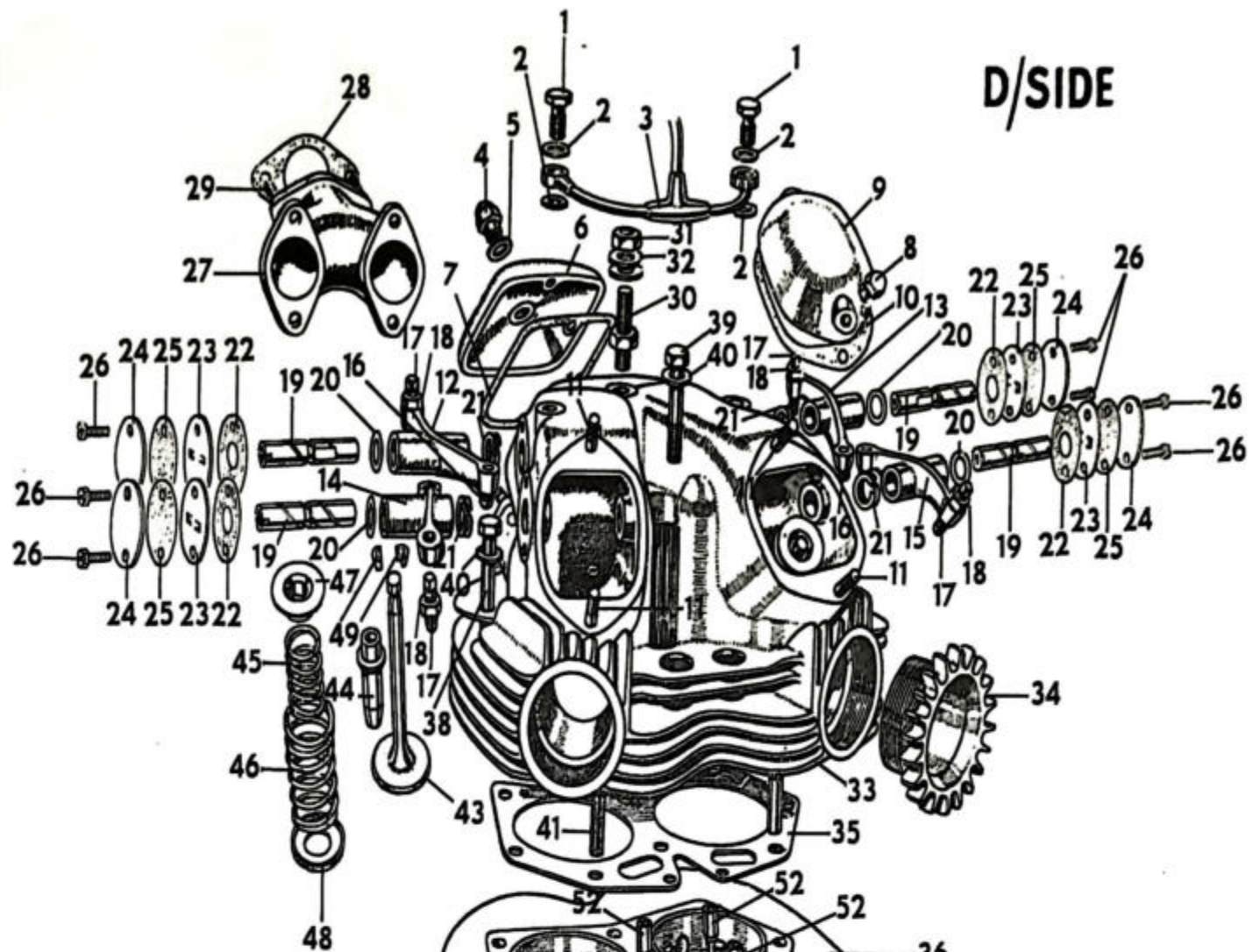
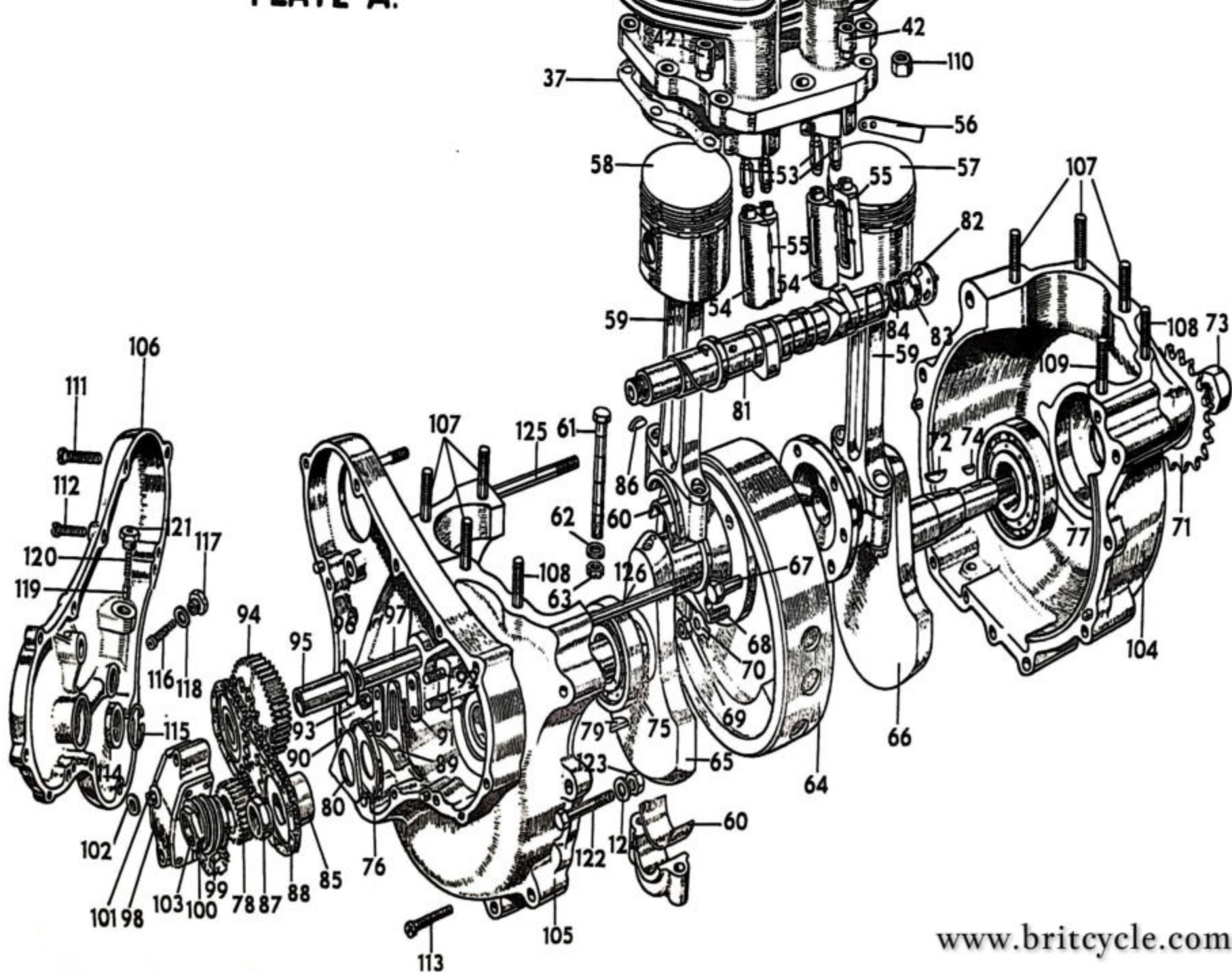


PLATE A.



| PLATE No. | PART No. | DESCRIPTION | QTY. | MODEL | PRICE EACH |
|----------------------------------|----------|--|------|-----------------|--------------|
| CRANKSHAFT | | | | | |
| — | 23742 | Crankshaft, assembled, less connecting rods | 1 | 88ss | |
| — | 23286 | Crankshaft, assembled, less connecting rods | 1 | 650ss and 99 | |
| — | 24276 | Crankshaft, assembled, less connecting rods | 1 | All 750 | |
| A65 | 23636 | Crankcheek, timing side | 1 | 88ss | |
| A65 | 23262 | Crankcheek, timing side | 1 | 650ss and 750 | |
| A66 | 23637 | Crankcheek, driving side | 1 | 88ss | |
| A66 | 23261 | Crankcheek, driving side | 1 | 650ss and 750 | |
| A64 | 23820 | Flywheel, only | 1 | 88ss | |
| A64 | 23315 | Flywheel, only | 1 | 650ss and 99 | |
| A64 | 24248 | Flywheel, only | 1 | All 750 | |
| — | T2105 | Dowel, flywheel, crankcheek | 1 | All | |
| A67 | T2033 | Bolt, crankcheek | 4 | All | |
| — | T2086 | Stud, crankcheek | 2 | All | |
| A69 | T2031 | Nut, for stud and bolt | 8 | 88ss | |
| A70 | T2032 | Plate, retaining dowel | 2 | All | |
| A69 | T2031 | Nut, for crankcheek stud | 6 | All except 88ss | |
| — | 23280 | Nut, for crankcheek bolt | 2 | All except 88ss | |
| — | E4591 | Plug, crankshaft | 1 | All | |
| CONNECTING ROD AND SHELLS | | | | | |
| A59 | 50023 | Connecting rod, with cap | 2 | 88ss | |
| A59 | 23297 | Connecting rod, with cap | 2 | 650 and 750 | |
| A61 | T2150 | Bolt, connecting rod cap | 4 | 88ss | |
| A61 | 23254 | Bolt, connecting rod cap | 4 | 650 and 750 | |
| A63 | 17827 | Nut, for cap bolt | 4 | 88ss | |
| A63 | 23253 | Nut, for cap bolt | 4 | 650 and 750 | |
| A62 | T2152 | Washer, for cap bolt | 4 | 88ss | |
| A60 | 17828 | Shell, connecting rod (two halves) | 2 | 88ss | } two halves |
| A60 | 23255 | Shell, connecting rod (two halves) | 2 | 650 and 750 | |
| — | T2160 | Bush, gudgeon pin | 2 | 88ss | |
| CONNECTING ROD SHELLS — OVERSIZE | | | | | |
| — | 24914 | Shell, connecting rod .005" (two halves) | 2 | 88ss | } two halves |
| — | 24915 | Shell, connecting rod .010" (two halves) | 2 | 88ss | |
| — | 24916 | Shell, connecting rod .020" (two halves) | 2 | 88ss | |
| — | 24917 | Shell, connecting rod .030" (two halves) | 2 | 88ss | |
| — | 25165 | Shell, connecting rod .010" (two halves) | 2 | 650 and 750 | |
| — | 25166 | Shell, connecting rod .020" (two halves) | 2 | 650 and 750 | |
| — | 25167 | Shell, connecting rod .030" (two halves) | 2 | 650 and 750 | |
| — | 25168 | Shell, connecting rod .040" (two halves) | 2 | 650 and 750 | |
| CRANKCASE | | | | | |
| — | 25113 | Crankcase, complete, with timing cover | 1 | 88ss and 650 | |
| — | 25109 | Crankcase, complete, with timing cover | 1 | G15 | |
| — | 25115 | Crankcase, complete, with timing cover | 1 | Atlas | |
| A104 | 21011 | Crankcase, drive side, only | 1 | 88ss and 650 | |
| A104 | 25043 | Crankcase, drive side, only | 1 | G15 | |
| A104 | 24278 | Crankcase, drive side, only | 1 | Atlas | |

| PLATE No. | PART No. | DESCRIPTION | QTY. | MODEL | PRICE EACH |
|---------------------------------|----------|---|------|--------------|------------|
| A105 | 25111 | Crankcase, timing side, only | 1 | 88ss and 650 | |
| A105 | 25107 | Crankcase, timing side, only | 1 | All 750 | |
| A106 | 18245/RC | Cover, timing gear | 1 | All | |
| — | T2236 | Gasket, timing cover | 1 | All | |
| A107 | T2018 | Stud, cylinder barrel | 6 | 88ss and 650 | |
| — | 24251 | Stud, cylinder barrel | 6 | All 750 | |
| A108 | T2209 | Stud, cylinder barrel (stepped) | 2 | All | |
| A109 | 18943 | Stud, cylinder barrel (front) | 1 | All | |
| A111 | 10940 ✓ | Screw, timing cover | 6 | All | |
| A112 | E6980 ✓ | Screw, timing cover | 6 | All | |
| — | 20621A | Washer, timing cover screw | 12 | All | |
| A113 | 10940 ✓ | Screw, for sump | 2 | All | |
| — | 11775 | Washer, for sump screw | 2 | All | |
| — | T2036 | Bush, camshaft, timing side | 1 | All | |
| — | T2037 | Bush, camshaft, driving side | 1 | All | |
| A114 | 048023 | Seal, oil, timing side shaft | 1 | All | |
| A115 | 048079 | Circlip, oil seal | 1 | All | |
| — | 16945 | Body, sump filter | 1 | All | |
| — | 16949 | Washer, filter body | 1 | All | |
| — | 16948 | Circlip, filter body | 1 | All | |
| — | 16946 | Gauze, sump filter | 1 | All | |
| — | 16947 | Washer, filter gauze | 1 | All | |
| — | E4591 | Plug, oilway, timing cover | 1 | All | |
| — | 16902 | Pin set, oilway | 1 | All | |
| — | T1084 | Washer, set pin | 1 | All | |
| CRANKCASE BREATHER | | | | | |
| — | 24313 | Pipe, crankcase breather | 1 | 88ss and 650 | |
| — | 22240 | Gasket, breather flange | 1 | 88ss and 650 | |
| — | T2213 | Screw, breather flange | 1 | 88ss and 650 | |
| — | 24309B | Pipe, rubber, breather | 1 | 88ss and 650 | |
| — | 24302 | Pipe, rubber, breather | 1 | All 750 | |
| — | 24300 | Elbow, breather pipe | 1 | All 750 | |
| — | 13786 | Washer, elbow | 1 | All 750 | |
| — | 24303 | Nut, elbow | 1 | All 750 | |
| PRESSURE RELEASE | | | | | |
| — | T2059A | Body, assembled, pressure release | 1 | All | |
| — | T2054 | Piston, release body | 1 | All | |
| — | T2061 | Spring, release body piston | 1 | All | |
| — | 15404 | Shim, packing | A/R | All | |
| — | T2060 | Nut, release body | 1 | All | |
| — | T2058 | Washer, release union | 1 | All | |
| — | T2057 | Washer, release union nut | 1 | All | |
| CYLINDER BARREL AND HEAD | | | | | |
| A36 | 20712B | Barrel, cylinder | 1 | 88ss | |
| A36 | 23263 | Barrel, cylinder | 1 | 650ss and 99 | |
| A36 | 24237A | Barrel, cylinder | 1 | All 750 | |
| A37 | T2093 | Gasket, cylinder base | 1 | 88ss and 650 | |
| A37 | 24249 | Gasket, cylinder base | 1 | All 750 | |
| — | T2016 | Nut, cylinder barrel stud, $\frac{3}{8}$ " | 7 | 88ss and 650 | |

| PLATE No. | PART No. | DESCRIPTION | QTY. | MODEL | PRICE EACH |
|------------------------------------|----------|--|------|--------------|------------|
| — | T2016 | Nut, cylinder barrel stud | 1 | All 750 | |
| — | 24250 | Nut, cylinder barrel stud | 6 | All 750 | |
| — | T2210 | Nut, cylinder barrel stud, $\frac{5}{16}$ " | 2 | All | |
| — | 000011 | Washer, cylinder barrel stud (stepped stud) | 2 | All | |
| — | 24252 | Washer, cylinder barrel stud | 6 | All 750 | |
| A33 | S650/136 | Head, cylinder, with valve guides | 1 | 88ss and 650 | |
| A33 | 25290 | Head, cylinder, with valve guides | 1 | All 750 | |
| A35 | T2141 | Gasket, cylinder head | 1 | 88ss and 650 | |
| A35 | 24255 | Gasket, cylinder head | 1 | All 750 | |
| A40 | T2161 | Stud, cylinder head to barrel, $\frac{5}{16}$ " | 2 | All | |
| A41 | 18756 | Stud, cylinder head to barrel | 3 | 88ss and 650 | |
| A41 | 24389 | Stud, cylinder head to barrel | 3 | All 750 | |
| A42 | T2034 | Nut, for stud | 2 | 88ss and 650 | |
| — | 24260 | Nut, for stud | 2 | All 750 | |
| — | T2017 | Nut, for stud, $\frac{5}{16}$ " | 2 | All | |
| — | 10637 | Nut, for stud | 1 | 88ss and 650 | |
| — | 24250 | Nut, for stud (rear) | 1 | All 750 | |
| A38 | T2096 | Bolt, cylinder head, long | 4 | 88ss and 650 | |
| A38 | 24253 | Bolt, cylinder head, long | 4 | All 750 | |
| A39 | T2097 | Bolt, cylinder head, short | 1 | All | |
| A40 | 16213 | Washer, for bolt | 4 | 88ss and 650 | |
| A40 | E5456 | Washer, for bolt | 4 | All 750 | |
| VALVES, GUIDES AND SPRINGS | | | | | |
| — | 17221 | Valve, inlet | 2 | 88ss and 650 | |
| — | 24330 | Valve, inlet | 2 | All 750 | |
| A43 | T2204 | Valve, exhaust | 2 | All | |
| A44 | T2011 | Guide, valve | 4 | All | |
| — | 23392 | Washer, heat insulating | 4 | All | |
| A48 | T2073 | Cup, valve spring | 4 | All | |
| A45 | 22839 | Spring, valve, inner | 4 | All | |
| A46 | 22838 | Spring, valve, outer | 4 | All | |
| A47 | T186 | Collar, valve, spring | 4 | All | |
| A49 | T187 | Cotter, valve pair | 4 | All | |
| PISTONS AND RINGS, STANDARD | | | | | |
| A57 | 23185 | Piston, complete, left hand | 1 | 88ss | |
| A57 | 24022 | Piston, complete, left hand | 1 | 650ss and 99 | |
| A57 | 24246 | Piston, complete, left hand | 1 | All 750 | |
| A58 | 23186 | Piston, complete, right hand | 1 | 88ss | |
| A58 | 24023 | Piston, complete, right hand | 1 | 650ss and 99 | |
| A58 | 24247 | Piston, complete, right hand | 1 | All 750 | |
| — | 23181 | Ring, piston, top, chrome | 2 | 88ss | |
| — | 23272 | Ring, piston, top, chrome | 2 | 650 | |
| — | 24284 | Ring, piston, top, chrome | 2 | All 750 | |
| — | 22797 | Ring, piston, plain | 2 | 88ss | |
| — | 23273 | Ring, piston, plain | 2 | 650 | |
| — | 24285 | Ring, piston, plain | 2 | All 750 | |
| — | 22509 | Ring, piston, scraper | 2 | 88ss | |
| — | 24024 | Ring, piston, scraper | 2 | 650 | |
| — | 24286 | Ring, piston, scraper | 2 | All 750 | |

| PLATE No. | PART No. | DESCRIPTION | QTY. | MODEL | PRICE EACH |
|--------------------------|----------|---|------|-----------------|------------|
| — | 21580 | Pin, gudgeon | 2 | 88ss | |
| — | 23275 | Pin, gudgeon | 2 | 650 | |
| — | 24287 | Pin, gudgeon | 2 | All 750 | |
| — | 22798 | Circlip, gudgeon, pin | 4 | 88ss | |
| — | 23276 | Circlip, gudgeon, pin | 4 | All except 88ss | |
| PISTONS, OVERSIZE | | | | | |
| — | 25125 | Piston, complete, left, .010" | 1 | 88ss | |
| — | 25145 | Piston, complete, left, .010" | 1 | 650 | |
| — | 25238 | Piston, complete, left, .010" | 1 | All 750 | |
| — | 25126 | Piston, complete, left, .020" | 1 | 88ss | |
| — | 25146 | Piston, complete, left, .020" | 1 | 650 | |
| — | 25239 | Piston, complete, left, .020" | 1 | All 750 | |
| — | 25127 | Piston, complete, left, .030" | 1 | 88ss | |
| — | 25147 | Piston, complete, left, .030" | 1 | 650 | |
| — | 25240 | Piston, complete, left, .030" | 1 | All 750 | |
| — | 25128 | Piston, complete, left, .040" | 1 | 88ss | |
| — | 25148 | Piston, complete, left, .040" | 1 | 650 | |
| — | 25241 | Piston, complete, left, .040" | 1 | All 750 | |
| — | 25129 | Piston, complete, right, .010" | 1 | 88ss | |
| — | 25149 | Piston, complete, right, .010" | 1 | 650 | |
| — | 25242 | Piston, complete, right, .010" | 1 | All 750 | |
| — | 25130 | Piston, complete, right, .020" | 1 | 88ss | |
| — | 25150 | Piston, complete, right, .020" | 1 | 650 | |
| — | 25243 | Piston, complete, right, .020" | 1 | All 750 | |
| — | 25131 | Piston, complete, right, .030" | 1 | 88ss | |
| — | 25151 | Piston, complete, right, .030" | 1 | 650 | |
| — | 25244 | Piston, complete, right, .030" | 1 | All 750 | |
| — | 25132 | Piston, complete, right, .040" | 1 | 88ss | |
| — | 25152 | Piston, complete, right, .040" | 1 | 650 | |
| — | 25245 | Piston, complete, right, .040" | 1 | All 750 | |
| — | 25133 | Ring, piston, top, chrome, .010" | 2 | 88ss | |
| — | 25153 | Ring, piston, top, chrome, .010" | 2 | 650 | |
| — | 25246 | Ring, piston, top, chrome, .010" | 2 | All 750 | |
| — | 25134 | Ring, piston, top, chrome, .020" | 2 | 88ss | |
| — | 25154 | Ring, piston, top, chrome, .020" | 2 | 650 | |
| — | 25247 | Ring, piston, top, chrome, .020" | 2 | All 750 | |
| — | 25135 | Ring, piston, top, chrome, .030" | 2 | 88ss | |
| — | 25155 | Ring, piston, top, chrome, .030" | 2 | 650 | |
| — | 25248 | Ring, piston, top, chrome, .030" | 2 | All 750 | |
| — | 25136 | Ring, piston, top, chrome, .040" | 2 | 88ss | |
| — | 25156 | Ring, piston, top, chrome, .040" | 2 | 650 | |
| — | 25249 | Ring, piston, top, chrome, .040" | 2 | All 750 | |
| — | 25137 | Ring, piston, plain, .010" | 2 | 88ss | |
| — | 25157 | Ring, piston, plain, .010" | 2 | 650 | |
| — | 25250 | Ring, piston, plain, .010" | 2 | All 750 | |
| — | 25138 | Ring, piston, plain, .020" | 2 | 88ss | |
| — | 25158 | Ring, piston, plain, .020" | 2 | 650 | |
| — | 25251 | Ring, piston, plain, .020" | 2 | All 750 | |
| — | 25139 | Ring, piston, plain, .030" | 2 | 88ss | |
| — | 25159 | Ring, piston, plain, .030" | 2 | 650 | |
| — | 25252 | Ring, piston, plain, .030" | 2 | All 750 | |
| — | 25140 | Ring, piston, plain, .040" | 2 | 88ss | |
| — | 25160 | Ring, piston, plain, .040" | 2 | 650 | |
| — | 25213 | Ring, piston, plain, .040" | 2 | All 750 | |

| PLATE No. | PART No. | DESCRIPTION | QTY. | MODEL | PRICE EACH |
|------------------------------|-------------|--|------|-----------------|------------|
| — | 25141 | Ring, piston, scraper, .010" | 2 | 88ss | |
| — | 25161 | Ring, piston, scraper, .010" | 2 | 650 | |
| — | 25254 | Ring, piston, scraper, .010" | 2 | All 750 | |
| — | 25142 | Ring, piston, scraper, .020" | 2 | 88ss | |
| — | 25162 | Ring, piston, scraper, .020" | 2 | 650 | |
| — | 25255 | Ring, piston, scraper, .020" | 2 | All 750 | |
| — | 25143 | Ring, piston, scraper, .030" | 2 | 88ss | |
| — | 25163 | Ring, piston, scraper, .030" | 2 | 650 | |
| — | 25256 | Ring, piston, scraper, .030" | 2 | All 750 | |
| — | 25144 | Ring, piston, scraper, .040" | 2 | 88ss | |
| — | 25164 | Ring, piston, scraper, .040" | 2 | 650 | |
| — | 25257 | Ring, piston, scraper, .040" | 2 | All 750 | |
| MAIN BEARINGS | | | | | |
| A75 | 17822 | Bearing, ball, timing side | 1 | All | |
| A76 | T2008 | Washer, sealing, timing side bearing ... | 1 | All | |
| A77 | 17824 | Bearing, roller, driving side | 1 | All | |
| — | T2187 | Oil seal, driving side bearing | 1 | All | |
| TIMING GEAR | | | | | |
| A78 | T2035 | Pinion, half-time | 1 | All | |
| A79 | E3683 | Key, for pinion | 1 | All | |
| A80 | T2007 | Plate, backing, for pinion | 1 | All | |
| A81 | 22729 | Camshaft | 1 | All | |
| A82 | T2078 | Plate, stationary, for camshaft breather ... | 1 | All | |
| A83 | 24301 | Rotary plate, for breather | 1 | All | |
| A84 | T2108 | Spring, for breather | 1 | All | |
| A85 | 20829 | Sprocket, camshaft | 1 | All | |
| A86 | E3683 | Key, for sprocket | 1 | All | |
| A87 | 17211 | Nut, for sprocket and r/c drive | 1 | All | |
| A88 | 17806 | Chain, camshaft (38 link endless) ... | 1 | All | |
| A89 | T2217 | Slipper, chain tension | 1 | All | |
| A90 | T2218 | Plate, chain tensioner, thick | 1 | All | |
| A91 | T2218A | Plate, chain tensioner, thin | 1 | All | |
| A92 | T247 | Stud, chain tensioner | 2 | All | |
| A93 | E3231 | Nut, for stud | 2 | All | |
| — | 18202 | Washer, for stud (fan disc 1/4") | 2 | All | |
| A94 | 23819 | Gear, intermediate, with sprockets ... | 1 | 88ss | |
| A94 | 50008 | Gear, intermediate, with sprockets ... | 1 | All except 88ss | |
| A95 | T2026 | Bush, intermediate gear | 1 | All | |
| A96 | T2080 | Washer, intermediate gear | 1 | All | |
| A97 | T2021 | Spindle, intermediate gear | 1 | All | |
| — | 17823 | Circlip, for spindle | 1 | All | |
| TAPPETS AND PUSH RODS | | | | | |
| A55 | 22771 | Tappet, left hand | 2 | All | |
| A54 | 22772 | Tappet, right hand | 2 | All | |
| A56 | T2142 | Plate, locating tappet | 2 | All | |
| — | T2143 | Screw, for Plate | 4 | All | |
| A50 | 88/ss-82 in | Push rod, complete, inlet | 2 | 88ss | |
| A50 | S650-82 in | Push rod, complete, inlet | 2 | All except 88ss | |
| A51 | 88/ss-82 ex | Push rod, complete, exhaust | 2 | 88ss | |
| A51 | S650-82 ex | Push rod, complete, exhaust | 2 | All except 88ss | |

| PLATE No. | PART No. | DESCRIPTION | QTY. | MODEL | PRICE EACH |
|------------------------------|----------|-------------------------------------|------|-----------------|------------|
| — | 23740 | Push rod, tube only, inlet | 2 | 88ss | |
| — | 23352 | Push rod, tube only, inlet | 2 | All except 88ss | |
| — | 23741 | Push rod, tube only, exhaust | 2 | 88ss | |
| — | 23354 | Push rod, tube only, exhaust | 2 | All except 88ss | |
| A52 | T2064 | End, push rod, top | 4 | All | |
| A53 | T2182 | End, push rod, bottom | 4 | All | |
| ROCKERS, COVERS, ETC. | | | | | |
| A12 | 18249 | Rocker, inlet, right hand | 1 | All | |
| A13 | 18250 | Rocker, inlet, left hand | 1 | All | |
| A14 | 18251 | Rocker, exhaust, right hand | 1 | All | |
| A15 | 18252 | Rocker, exhaust, left hand | 1 | All | |
| A16 | T2063 | Ball end, rocker | 4 | All | |
| A17 | T2074 | Adjuster, rocker | 4 | All | |
| A18 | T232 | Nut, adjuster | 4 | All | |
| A19 | T2237 | Shaft, rocker | 4 | All | |
| A20 | 18102 | Washer, thrust, for shaft | 4 | All | |
| A21 | 18103 | Washer, spring, for shaft | 4 | All | |
| A22 | T2083 | Washer, joint, for shaft | 4 | All | |
| A23 | T2238 | Plate, locking, for shaft | 4 | All | |
| A24 | T2239 | Plate, retaining, for shaft | 4 | All | |
| A25 | T2240 | Washer, joint, for plate | 4 | All | |
| A26 | T2256 | Set pin, for retaining plate | 8 | All | |
| A4 | T2162 | Nut, domed, rear cap | 1 | All | |
| A5 | T2082 | Washer, domed nut | 1 | All | |
| A6 | 18094 | Cap, rocker, rear | 1 | All | |
| A7 | T2084 | Washer, sealing, rear cap | 1 | All | |
| — | 18033 | Stud, rear cap | 1 | All | |
| — | 000579 | Dowel, rear cap | 1 | All | |
| A8 | T2085 | Nut, front cap stud | 4 | All | |
| A9 | 18093 | Cap, rocker, front | 2 | All | |
| A10 | T2088 | Washer, sealing, front cap | 2 | All | |
| A11 | T2252 | Stud, front cap | 4 | All | |
| A3 | 25192 | Pipe, rocker box oil feed | 1 | All | |
| — | 22167 | Hose, rocker feed pipe | 1 | All | |
| A1 | 18101 | Bolt, banjo, feed pipe | 2 | All | |
| A2 | T1084 | Washer, fibre, banjo bolt | 4 | All | |
| OIL PUMP | | | | | |
| A98 | 15522 | Oil pump, complete | 1 | 88ss | |
| A98 | 23111 | Oil pump, complete | 1 | All except 88ss | |
| A99 | 15511A | Nut, oil pump spindle | 1 | All | |
| A100 | T2077 | Worm gear wheel (on pump) | 1 | All | |
| — | 17697 | Key, for gear wheel | 1 | All | |
| A101 | 15515 | Bush, feed, for pump | 1 | All | |
| — | 21146 | Shim, packing, for feed bush | 1 | All | |
| A102 | T272 | Washer, sealing feed bush | 1 | All | |
| A103 | T2076 | Driving worm, on mainshaft | 1 | All | |
| — | E4440 | Stud, pump to crankcase | 2 | All | |
| — | E3231 | Nut, for stud | 2 | All | |
| — | E4590 | Grub screw, oil stop | 1 | All | |

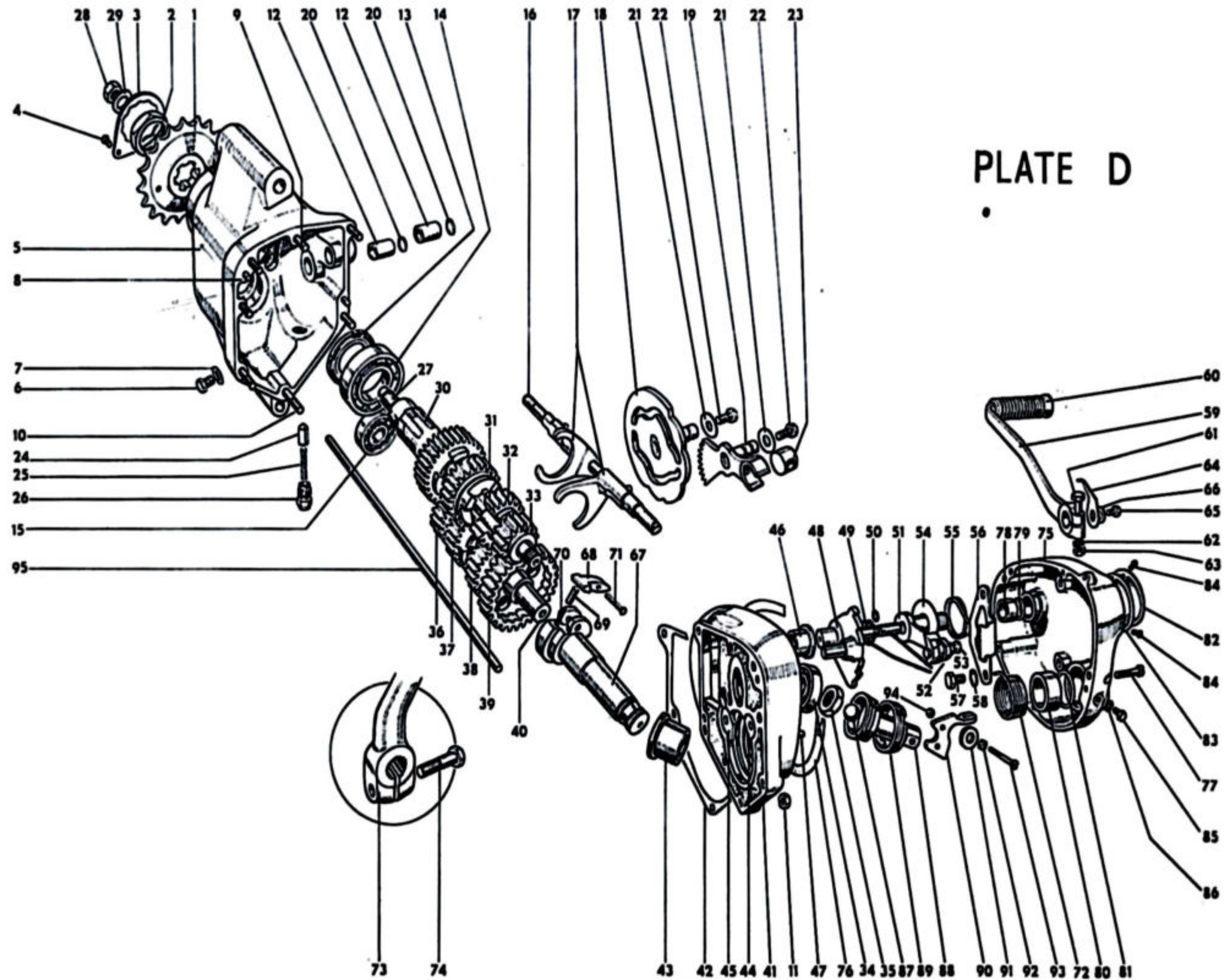
| PLATE No. | PART No. | DESCRIPTION | QTY. | MODEL | PRICE EACH |
|--------------------------------|----------|--|------|-----------------------------|------------|
| STATOR HOUSING | | | | | |
| — | 20885 | Housing, for stator | 1 | 88ss, 650 and Atlas | |
| — | 20693 | Screw, for housing | 3 | 88ss, 650 and Atlas | |
| — | 21411 | Washer, for screw | 3 | 88ss, 650 and Atlas | |
| HEAD STEADY STAY | | | | | |
| — | 23868 | Plate, head steady | 1 | 88ss, 650 and Atlas | |
| A30 | 18032 | Stud, for plate, in head | 1 | 88ss, 650 and Atlas | |
| A32 | 000010 | Washer, for stud | 1 | 88ss, 650 and Atlas | |
| A31 | E3224 | Nut, for stud | 1 | 88ss, 650 and Atlas | |
| — | E3798 | Bolt, steady plate to frame | 2 | 88ss, 650 and Atlas | |
| — | 11796 | Washer, for bolt | 2 | 88ss, 650 and Atlas | |
| — | 18202 | Washer, for bolt | 2 | 88ss, 650 and Atlas | |
| — | E3223 | Nut, for bolt | 2 | 88ss, 650 and Atlas | |
| — | 030420 | Head steady, assembled | 1 | All G15 models | |
| — | 030424 | Bolt, head steady | 1 | All G15 models | |
| — | 000010 | Washer, for bolt | 1 | All G15 models | |
| CRANKCASE BOLTS | | | | | |
| A122 | 13870 | Bolt, crankcase, short | 1 | All | |
| A124 | E5456 | Washer, for bolt | 1 | All | |
| A123 | E3223 | Nut, for bolt | 1 | All | |
| A125 | T2013 | Stud, crankcase, top, rear | 1 | All | |
| — | E5376 | Washer, for stud | 1 | All | |
| — | E3224 | Nut, for stud | 1 | All except 650/99 and Atlas | |
| — | E3224A | Nut, for stud | 1 | 650/99 and Atlas | |
| A126 | 19077 | Stud, crankcase, top, front | 1 | All | |
| — | T2221 | Washer, for stud | 1 | All | |
| — | E3229 | Nut, for stud | 1 | All | |
| — | E3214 | Stud, crankcase | 1 | 88ss, 650 and Atlas | |
| — | E3231 | Nut, for stud | 2 | 88ss, 650 and Atlas | |
| ENGINE PLATES AND BOLTS | | | | | |
| H49 | 15621 | Plate, engine, front | 2 | 88ss, 650 and Atlas | |
| H50 | 20999 | Cover, front engine plate | 1 | 88ss, 650 and Atlas | |
| H1 | T2012 | Stud, crankcase/engine plate, top and centre, front | 1 | 88ss, 650 and Atlas | |
| — | 000010 | Washer, for stud | 2 | 88ss, 650 and Atlas | |
| H2 | E3224A | Nut, for stud | 2 | 88ss, 650 and Atlas | |
| H5 | 22694 | Stud, crankcase/engine plate and frame, bottom | 1 | 88ss, 650 and Atlas | |
| H6 | 000010 | Washer, for stud | 2 | 88ss, 650 and Atlas | |
| H7 | E3224 | Nut, for stud | 2 | 88ss, 650 and Atlas | |
| — | T2012 | Stud, crankcase/engine plate, top, rear | 1 | 88ss, 650 and Atlas | |
| — | 000010 | Washer, for stud | 2 | 88ss, 650 and Atlas | |
| — | E3224A | Nut, for stud | 2 | 88ss, 650 and Atlas | |
| H8 | T2012 | Stud, crankcase/engine plate, centre, rear | 1 | 88ss, 650 and Atlas | |
| H9 | 000010 | Washer, for stud | 2 | 88ss, 650 and Atlas | |
| H10 | E3224 | Nut, for stud | 2 | 88ss, 650 and Atlas | |
| H3 | E4261 | Bolt, crankcase/engine plate, bottom, rear | 1 | 88ss, 650 and Atlas | |
| H4 | E3223 | Nut, for bolt | 1 | 88ss, 650 and Atlas | |
| — | 000371 | Bolt, engine plate/frame, bottom | 2 | 88ss, 650 and Atlas | |

| PLATE No. | PART No. | DESCRIPTION | QTY. | MODEL | PRICE EACH |
|--------------------------------|----------|---|------|---------------------------|------------|
| — | E5456 | Washer, for bolt | 4 | 88ss, 650 and Atlas | |
| — | 000004 | Nut, for bolt | 2 | 88ss, 650 and Atlas | |
| H11 | 16317 | Bolt, engine plate/frame, front and rear | 6 | 88ss, 650 and Atlas | |
| H12 | 000010 | Washer, for bolt | 12 | 88ss, 650 and Atlas | |
| H13 | E3224 | Nut, for bolt | 6 | 88ss, 650 and Atlas | |
| H52 | 20700 | Plate, engine, rear, left hand | 1 | 88ss, 650 and Atlas | |
| H51 | 50229 | Plate, engine, rear, right hand | 1 | 88ss, 650 and Atlas | |
| H53 | 19100 | Cover, rear engine plate | 1 | 88ss, 650 and Atlas | |
| — | 19678 | Bolt, rear engine plate, right hand | 1 | 88ss, 650 and Atlas | |
| — | E5456 | Washer, for bolt | 1 | 88ss, 650 and Atlas | |
| — | E3223 | Nut, for bolt | 1 | 88ss, 650 and Atlas | |
| ENGINE PLATES AND BOLTS | | | | | |
| — | 030216 | Plate, engine, front, assembled, left hand | 1 | All G15 models | |
| — | 030219 | Plate, engine, front, assembled, right hand | 1 | All G15 models | |
| — | 000303 | Stud, crankcase/engine plate | 2 | All G15 models | |
| — | 000010 | Washer, for stud | 4 | All G15 models | |
| — | 000003 | Nut, for stud | 4 | All G15 models | |
| — | 010823 | Stud, front engine plate to frame | 1 | All G15 models | |
| — | 000003 | Nut, for stud | 2 | All G15 models | |
| — | 000010 | Washer, for stud | 2 | All G15 models | |
| — | 000277 | Stud, front engine plate to engine | 1 | All G15 models | |
| — | 000004 | Nut, for stud | 2 | All G15 models | |
| — | 030221 | Spacer, front engine plate | 2 | All G15 models | |
| — | 030227 | Plate, engine, rear, left hand | 1 | All G15 models | |
| — | 030231 | Plate, engine, rear, right hand | 1 | All G15 models | |
| — | 000304 | Stud, rear engine plate, top | 2 | All G15 models | |
| — | 000288 | Stud, rear engine plate, bottom | 1 | All G15 models | |
| — | 000010 | Washer, for 000304 stud | 4 | All G15 models | |
| — | 000011 | Washer, for 000288 stud | 2 | All G15 models | |
| — | 000003 | Nut, for 000304 stud | 4 | All G15 models | |
| — | 000004 | Nut, for 000288 stud | 2 | All G15 models | |
| — | 030238 | Cover, engine plate | 1 | All G15 models | |
| ENGINE SPROCKET | | | | | |
| A71 | T2180A | Sprocket, 17 teeth (alternative) | 1 | All | |
| A71 | T2180B | Sprocket, 18 teeth, normal | 1 | 88ss | |
| A71 | T2180C | Sprocket, 19 teeth (alternative) | 1 | All | |
| A71 | T2180D | Sprocket, 20 teeth (alternative) | 1 | All | |
| A71 | T2180E | Sprocket, 21 teeth (Home and Export), normal | 1 | 650 and Atlas | |
| A71 | T2180E | Sprocket, 21 teeth (Export), normal | 1 | G15 CS "M" and G15 CS "N" | |
| A71 | T2180F | Sprocket, 22 teeth (Export), normal | 1 | G15 P "M" and G15 P "N" | |
| A71 | T2180G | Sprocket, 23 teeth (Home), normal | 1 | G15 P "M" and G15 P "N" | |
| A72 | E3682 | Key, for sprocket | 1 | All | |
| MAGNETO | | | | | |
| — | 42379B | Magneto (Lucas K2F) | 1 | All | |
| — | 47508D | Sprocket, with auto advance | 1 | All | |

| PLATE No. | PART No. | DESCRIPTION | QTY. | MODEL | PRICE EACH |
|--------------------|----------|--|------|---------------------|------------|
| — | 458865 | Pick-up, with brush and spring, right hand | 1 | All | |
| — | 458866 | Pick-up, with brush and spring, left hand | 1 | All | |
| — | 451260 | Brush and spring, for pick-up ... | 2 | All | |
| — | 410600 | Nut, H.T. cable ... | 2 | All | |
| — | 459269 | Cover, contact breaker ... | 1 | All | |
| — | 455190 | Brush and spring, ignition cut-out ... | 1 | All | |
| — | 492854 | Contact breaker ... | 1 | All | |
| — | 54440888 | Contact set ... | 1 | All | |
| — | 455191 | Brush and spring, earthing, with holder | 1 | All | |
| — | 498157 | Spring set, auto-advance ... | 1 | All | pair |
| — | T2191 | Washer, joint, magneto ... | 1 | All | |
| — | T2245 | Stud, fixing magneto ... | 2 | All | |
| — | 11796 | Washer, fixing stud ... | 2 | All | |
| — | E3231 | Nut, fixing stud ... | 2 | All | |
| — | 25105 | Bolt, fixing magneto ... | 1 | All | |
| — | 010706 | Washer, fibre, for bolt ... | 1 | All | |
| — | 015306 | Washer, shakeproof, for bolt ... | 1 | All | |
| — | E3229 | Nut, for bolt ... | 1 | All | |
| — | 14490 | Clip, H.T. lead ... | 1 | All | |
| — | 18257 | Chain, magneto ... | 1 | All | |
| CARBURETTER | | | | | |
| — | 23874 | Sleeve, inlet port ... | 2 | 88ss and 650 | |
| — | 23358 | Spacer, carburetter, thin ... | 2 | All | |
| — | 23872 | Spacer, carburetter, thick ... | 2 | 88ss, 650 and Atlas | |
| — | 030561 | Spacer, carburetter ... | 2 | All G15 | |
| — | 23873 | Union, balance ... | 2 | All | |
| — | 11775 | Washer, for union ... | 2 | All | |
| — | 23875 | Hose, balance pipe, 5/8" ... | 1 | All | |
| — | 23395 | Screw, fixing carburetter ... | 1 | 88ss, 650 and Atlas | |
| — | 030343 | Screw, fixing carburetter ... | 1 | All G15 | |
| — | 11796 | Washer, for screw ... | 1 | All | |
| — | 23563 | Stud, fixing carburetter ... | 3 | 88ss, 650 and Atlas | |
| — | 21999 | Stud, fixing carburetter ... | 3 | All G15 | |
| — | E3231 | Nut, fixing stud ... | 3 | All | |
| — | 11796 | Washer, shakeproof, for stud ... | 3 | All | |
| — | 000581 | Gasket, carburetter ... | 2 | All G15 | |
| — | 000952 | Petrol pipe float chamber to carb., 2" ... | 1 | All | |
| — | 20000 | 'O' ring, sealing carburetter ... | 1 | All | |
| — | 24018 | Carburetter, complete, less cables, left hand ... | 1 | 88ss | |
| — | 25199 | Carburetter, complete, less cables, left hand ... | 1 | 650ss | |
| — | 23406 | Carburetter, complete, less cables, left hand ... | 1 | 650/99 | |
| — | 25222 | Carburetter, complete, less cables, left hand ... | 1 | Atlas | |
| — | 24598 | Carburetter, complete, less cables, left hand ... | 1 | G15P | |
| — | 25121 | Carburetter, complete, less cables, left hand ... | 1 | G15CS | |
| — | 24019 | Carburetter, complete, less cables, right hand ... | 1 | 88ss | |
| — | 25200 | Carburetter, complete, less cables, right hand ... | 1 | 650ss | |

| PLATE No. | PART No. | DESCRIPTION | QTY. | MODEL | PRICE EACH |
|-----------|----------|---|------|----------------------|------------|
| — | 23407 | Carburetter, complete, less cables, right hand | 1 | 650/99 | |
| — | 25223 | Carburetter, complete, less cables, right hand | 1 | Atlas | |
| — | 25499 | Carburetter, complete, less cables, right hand | 1 | G15P | |
| — | 25122 | Carburetter, complete, less cables, right hand | 1 | G15CS | |
| — | 376-003 | Body, only, left hand | 1 | 88ss, 650ss & 650/99 | |
| — | 389-002 | Body, only, left hand | 1 | All 750 | |
| — | 376-164 | Body, only, right hand | 1 | 88ss, 650ss & 650/99 | |
| — | 389-028 | Body, only, right hand | 1 | All 750 | |
| — | 376-077 | Cover, float chamber | 2 | All | |
| — | 376-078 | Washer, side cover | 2 | All | |
| — | 376-079 | Screw, side cover | 6 | All | |
| — | 376-083 | Float, only | 1 | All | |
| — | 376-094 | Bush, float spindle | 1 | All | |
| — | 376-089 | Needle, float | 1 | All | |
| — | 376-088 | Seating, float needle | 1 | All | |
| — | 376-065 | Ring, mixing chamber cap | 2 | 88ss, 650ss & 650/99 | |
| — | 389-065 | Ring, mixing chamber cap | 2 | All 750 | |
| — | 4-235 | Spring, for ring | 2 | 88ss, 650ss & 650/99 | |
| — | 29-201 | Spring, for ring | 2 | All 750 | |
| — | 4-241 | Screw, for spring | 2 | All | |
| — | 376-064 | Cap, mixing chamber | 2 | 88ss, 650ss & 650/99 | |
| — | 389-064 | Cap, mixing chamber | 2 | All 750 | |
| — | 4-035 | Adjuster, control cables | 4 | All | |
| — | 376-062 | Valve, air | 2 | 88ss, 650ss & 650/99 | |
| — | 389-062 | Valve, air | 2 | All 750 | |
| — | 6-047 | Guide, air valve | 2 | 88ss, 650ss & 650/99 | |
| — | 29-057 | Guide, air valve | 2 | All 750 | |
| — | 376-060 | Valve, throttle, size 3½ | 2 | 88ss, 650ss & 650/99 | |
| — | 389-060 | Valve, throttle, size 3 | 2 | All 750 | |
| — | 4-046 | Spring, air valve | 2 | All | |
| — | 376-132 | Spring, throttle valve | 2 | 88ss, 650ss & 650/99 | |
| — | 389-092 | Spring, throttle valve | 2 | All 750 | |
| — | 376-068 | Screw, throttle stop | 2 | All | |
| — | 376-069 | Spring, stop screw | 2 | All | |
| — | 332-017 | Screw, pilot air adjusting | 2 | All | |
| — | 4-148 | Spring, adjusting screw | 2 | All | |
| — | 376-063 | Needle, jet, taper | 2 | 88ss, 650ss & 650/99 | |
| — | 389-063 | Needle, jet, taper | 2 | All 750 | |
| — | 4-230 | Clip, jet needle | 2 | All | |
| — | 376-072 | Jet, needle, size .1065 | 2 | All | |
| — | 376-100 | Jet, main, size 250 | 2 | 88ss and 650/99 | |
| — | 376-100 | Jet, main, size 270 | 2 | 650ss | |
| — | 376-100 | Jet, main, size 350 | 2 | Atlas | |
| — | 376-100 | Jet, main, size 420 | 2 | G15P | |
| — | 376-100 | Jet, main, size 380 | 2 | G15CS | |
| — | 376-073 | Holder, main jet | 2 | All | |
| — | 376-074 | Washer, jet holder | 2 | All | |
| — | 376-075 | Cover, main jet | 2 | All | |
| — | 376-076 | Jet, pilot, size 25 | 2 | 88ss, 650ss & 650/99 | |
| — | 376-076 | Jet, pilot, size 20 | 2 | All 750 | |
| — | 376-095 | Nut, pilot jet cover | 2 | All | |
| — | 116-162 | Washer, jet cover nut | 2 | All | |

| PLATE No. | PART No. | DESCRIPTION | QTY. | MODEL | PRICE EACH |
|---------------------|----------|--|------|--------------------------------|------------|
| — | 376-057 | Choke, or jet block, 1 $\frac{1}{8}$ " ... | 2 | 88ss, 650ss & 650/99 | |
| — | 389-056 | Choke, or jet block, 1 $\frac{1}{8}$ " ... | 2 | All 750 | |
| — | 376-067 | Washer, jet block ... | 2 | All | |
| — | 376-070 | Peg, locating jet block ... | 2 | All | |
| — | 376-097 | Banjo, petrol feed, left hand ... | 1 | 650/99 and all 750 | |
| — | 244-1730 | Banjo, petrol feed, left hand ... | 1 | 88ss and 650ss | |
| — | 376-141 | Banjo, petrol feed, right hand ... | 1 | All | |
| — | 376-091 | Bolt, for banjo, left hand ... | 1 | All | |
| — | 376-140 | Bolt, for banjo, right hand ... | 1 | All | |
| — | 376-092 | Washer, banjo bolt ... | 2 | All | |
| — | 14-175 | Washer, seating banjo bolt ... | 2 | All | |
| — | 373-093 | Gauze, filter ... | 2 | All | |
| — | 343-011 | Body, tickler ... | 1 | All | |
| — | 376-086 | Plunger, tickler ... | 1 | All | |
| — | 376-087 | Spring, tickler ... | 1 | All | |
| — | 376-066 | Venturi, intake ... | 1 | 88ss, 650ss & 650/99 | |
| — | 389-066 | Venturi, intake ... | 1 | All 750 | |
| EXHAUST PIPE | | | | | |
| — | 24020 | Pipe, only, left hand ... | 1 | 88ss, 650ss, Atlas and 650/99 | |
| — | 23432 | Pipe, only, left hand ... | 1 | 650/99 and Atlas (U.S.A. only) | |
| — | 24021 | Pipe, only, right hand ... | 1 | 88ss, 650ss, Atlas and 650/99 | |
| — | 23433 | Pipe, only, right hand ... | 1 | 650/99 and Atlas (U.S.A. only) | |
| — | 030262 | Pipe, only, left hand ... | 1 | G15P | |
| — | 030264 | Pipe, only, left hand ... | 1 | G15CS | |
| — | 030266 | Pipe, only, right hand ... | 1 | G15P | |
| — | 030268 | Pipe, only, right hand ... | 1 | G15CS | |
| A34 | 18092 | Ring, locking exhaust pipe ... | 2 | All | |
| — | T2166 | Washer, locking ring ... | 2 | All | |
| — | 000363 | Bolt, clamping ... | 2 | G15CS | |
| — | 000011 | Washer, for bolt ... | 4 | G15CS | |
| — | 000004 | Nut, for bolt ... | 2 | G15CS | |
| — | 000368 | Bolt, support ... | 2 | G15CS | |
| — | 000011 | Washer, for bolt ... | 4 | G15CS | |
| — | 000004 | Nut, for bolt ... | 2 | G15CS | |
| — | 028247 | Bracket, for silencer ... | 2 | G15CS | |
| — | 030449 | Clip, exhaust pipe ... | 2 | G15CS | |
| SILENCER | | | | | |
| — | 23768 | Silencer, left hand ... | 1 | 88ss, 650 and Atlas | |
| — | 23767 | Silencer, right hand ... | 1 | 88ss, 650 and Atlas | |
| — | 22804 | Bracket, silencer, left hand ... | 1 | 88ss, 650 and Atlas | |
| — | 22805 | Bracket, silencer, right hand ... | 1 | 88ss, 650 and Atlas | |
| — | 22-475 | Bolt, for bracket ... | 4 | 88ss, 650 and Atlas | |
| — | 18202 | Washer, for bolt ... | 8 | 88ss, 650 and Atlas | |
| — | 16255 | Clip, silencer ... | 2 | 88ss, 650 and Atlas | |
| — | E3154 | Bolt, for clip ... | 2 | 88ss, 650 and Atlas | |
| — | E3231 | Nut, for clip bolt ... | 2 | 88ss, 650 and Atlas | |
| — | 029727 | Silencer, left hand ... | 1 | G15P | |
| — | 029728 | Silencer, right hand ... | 1 | G15P | |



| PLATE No. | PART No. | DESCRIPTION | QTY. | MODEL | PRICE EACH |
|-----------------------------|----------|---|------|---------------------|------------|
| — | 000347 | Bolt, clamping silencer | 2 | G15P | |
| — | 024558 | Washer, clamping bolt | 4 | G15P | |
| — | 000005 | Nut, clamping bolt | 2 | G15P | |
| — | 000367 | Bolt, fixing silencer | 2 | G15P | |
| — | 000011 | Washer, plain, fixing bolt | 2 | G15P | |
| — | 000192 | Washer, spring, fixing bolt | 2 | G15P | |
| — | 000004 | Nut, fixing bolt | 2 | G15P | |
| CHAINS | | | | | |
| — | 18265 | Chain, front, 75 link, $\frac{1}{2}$ " \times .305" | 1 | 88ss | |
| — | 17835 | Chain, front, 76 link, $\frac{1}{2}$ " \times .305" | 1 | 650 and Atlas | |
| — | 022870 | Chain, front, 68 link, $\frac{1}{2}$ " \times .305" | 1 | All G15 | |
| — | 18563 | Chain, rear, 97 link, $\frac{5}{8}$ " \times $\frac{1}{4}$ " | 1 | 88ss, 650 and Atlas | |
| — | 022876 | Chain, rear, 97 link, $\frac{5}{8}$ " \times $\frac{3}{8}$ " | 1 | All G15 | |
| GEARBOX FIXING PARTS | | | | | |
| H14 | 14367 | Bolt, fixing, top | 1 | 88ss, 650 and Atlas | |
| H14 | 030234 | Bolt, fixing, top | 1 | All G15 | |
| H15 | 15170 | Nut, top fixing bolt | 1 | 88ss, 650 and Atlas | |
| H15 | 000002 | Nut, top fixing bolt | 1 | All G15 | |
| — | 000177 | Washer, top fixing bolt | 2 | All G15 | |
| — | 030250 | Spacer, top fixing bolt | 1 | All G15 | |
| — | 16410 | Stud, pivot, bottom | 1 | 88ss, 650 and Atlas | |
| — | 024276 | Stud, pivot, bottom | 1 | All G15 | |
| — | 000008 | Washer, pivot stud | 2 | 88ss, 650 and Atlas | |
| — | E3227 | Nut, pivot stud | 2 | 88ss, 650 and Atlas | |
| — | 000002 | Nut, pivot stud | 2 | All G15 | |
| H17 | 16997 | Adjuster, gearbox | 1 | 88ss, 650 and Atlas | |
| — | 023259 | Adjuster, gearbox | 1 | All G15 | |
| H16 | E3231 | Nut, adjuster | 2 | 88ss, 650 and Atlas | |
| — | 000004 | Nut, adjuster | 1 | All G15 | |
| — | 022504 | Crosshead, adjuster | 1 | All G15 | |
| — | 000402 | Bolt, crosshead | 1 | All G15 | |
| — | 000010 | Washer, for bolt | 1 | All G15 | |
| GEARBOX SHELL | | | | | |
| D5 | 040097 | Shell, with two bushes | 1 | 88ss, 650 and Atlas | |
| D5 | 040144 | Shell, with two bushes | 1 | All G15 | |
| D41 | 028534 | Case, inner, kickstart | 1 | All | |
| D75 | 028535 | Cover, outer, kickstart | 1 | All | |
| D42 | 040030 | Gasket, inner case | 1 | All | |
| D76 | 040055 | Gasket, outer cover | 1 | All | |
| D6 | 040138 | Plug, drain | 1 | All | |
| D7 | 000200 | Washer, for plug | 1 | All | |
| D85 | 040137 | Plug, oil level | 1 | All | |
| D86 | 000203 | Washer, for plug | 1 | All | |
| D82 | 040053 | Cover, inspection | 1 | All | |
| D83 | 040057 | Gasket, inspection cover | 1 | All | |
| D84 | 000450 | Screw, for cover | 2 | All | |
| D8 | 000577 | Dowel, kickstart case | 2 | All | |
| D9 | 040064 | Stud, kickstart case | 2 | All | |
| D10 | 000271 | Stud, kickstart case | 5 | All | |
| D11 | 000004 | Nut, for stud | 7 | All | |

| PLATE No. | PART No. | DESCRIPTION | QTY. | MODEL | PRICE EACH |
|-----------------------------------|----------|--|------|---------------------|------------|
| D47 | 000577 | Dowel, kickstart cover | 2 | All | |
| D77 | 000482 | Screw, kickstart cover | 5 | All | |
| SHAFTS AND GEARS | | | | | |
| D27 | 040001 | Mainshaft, gearbox | 1 | All | |
| D40 | 040025 | Layshaft, gearbox | 1 | All | |
| D30 | 040422 | Gear, driving, main, with bushes, 23 teeth | 1 | All | |
| D33 | 040026 | Gear, first, mainshaft | 1 | All | |
| D32 | 040418 | Gear, second, mainshaft | 1 | All | |
| D31 | 040012 | Gear, third, mainshaft | 1 | All | |
| D39 | 040115 | Gear, first, layshaft | 1 | All | |
| D38 | 040019 | Gear, second, layshaft | 1 | All | |
| D37 | 040420 | Gear, third, layshaft | 1 | All | |
| D36 | 040284 | Gear, pinion, top, layshaft | 1 | All | |
| — | 040062 | Bush, main driving gear | 2 | All | |
| — | 040048 | Bush, mainshaft second gear | 1 | All | |
| — | 040047 | Bush, layshaft third gear | 1 | All | |
| — | 040046 | Bush, layshaft first gear | 1 | All | |
| GEARBOX BEARINGS AND SEALS | | | | | |
| D14 | 040098 | Bearing, ball, main gear | 1 | All | |
| D34 | 040099 | Bearing, ball, mainshaft in kickstart case | 1 | All | |
| D15 | 040100 | Bearing, ball, layshaft in shell | 1 | All | |
| D12 | 040056 | Bush, in shell, camplate/quadrant | 2 | All | |
| D13 | 040132 | Seal, oil, main gear bearing | 1 | All | |
| D20 | 040129 | Seal "O" ring, quadrant and camplate ... | 1 | All | |
| D43 | 040473 | Bush, in kickstart case, for kickstart spindle | 1 | All | |
| D46 | 040061 | Bush, in kickstart case, for footchange spindle | 1 | All | |
| D80 | 040472 | Bush, in cover, for kickstart spindle ... | 1 | All | |
| D78 | 040063 | Bush, in cover, for footchange spindle ... | 1 | All | |
| D50 | 040079 | Seal, "O" ring, ratchet spindle | 1 | All | |
| D79 | 040006 | Seal, "O" ring, footchange spindle | 1 | All | |
| D81 | 040005 | Seal, "O" ring, kickstart | 1 | All | |
| D26 | 040036 | Bush, camplate plunger | 1 | All | |
| GEARBOX SPROCKET | | | | | |
| D1 | 040451 | Sprocket, gearbox, 17 teeth, $\frac{5}{8}$ " x $\frac{3}{8}$ " ... | 1 | All G15 | |
| D1 | 040010 | Sprocket, gearbox, 16 teeth, $\frac{5}{8}$ " x $\frac{1}{4}$ " ... | 1 | 88ss, 650 and Atlas | |
| D2 | 040070 | Nut, gearbox sprocket | 1 | All | |
| D3 | 040076 | Plate, locking nut | 1 | All | |
| D4 | 000450 | Screw, locking plate | 1 | All | |
| — | 040131 | Spacer, for sprocket | 1 | All | |
| FOOTCHANGE | | | | | |
| D18 | 040018 | Camplate, only | 1 | All | |
| D18 | 040015 | Spindle, only | 1 | All | |
| D19 | 040109 | Quadrant assembly | 1 | All | |
| D21 | 000174 | Washer, for camplate and quadrant spindle | 2 | All | |
| D22 | 040136 | Screw, for camplate and quadrant spindle | 2 | All | |

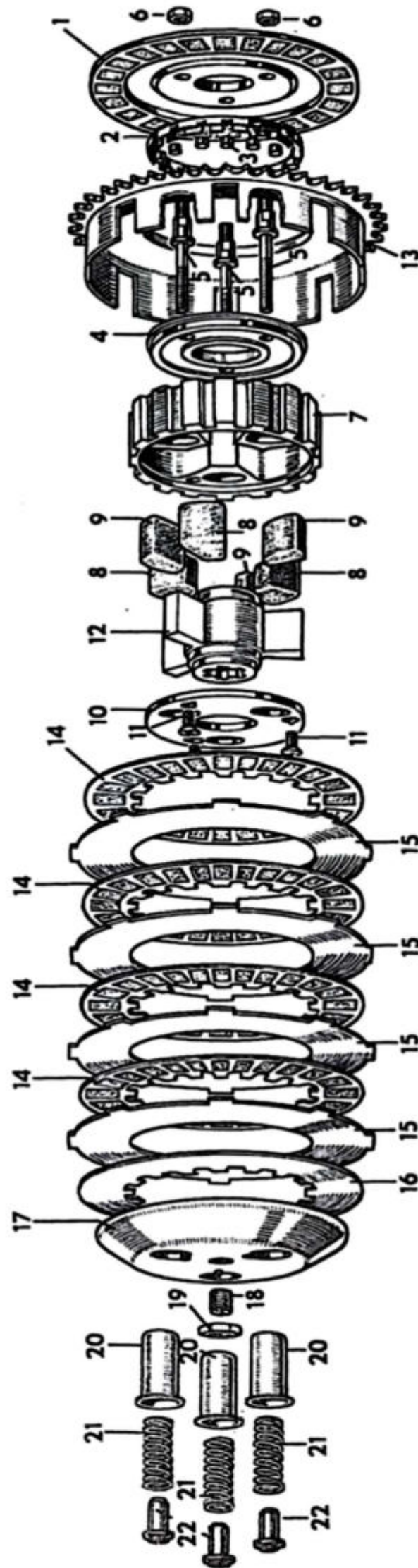


PLATE E

| PLATE No. | PART No. | DESCRIPTION | QTY. | MODEL | PRICE EACH |
|---------------|----------------------|--|------|-------|------------|
| D17 | 040022 | Fork, selector | 2 | All | |
| D16 | 040035 | Shaft, selector fork | 1 | All | |
| D48 | 040111 | Gear, ratchet assembly | 1 | All | |
| D23 | 040078 | Roller, knuckle pin | 1 | All | |
| -D49 | 040038 | Spring, pawl, gear change | 1 | All | |
| — | 040110 | Carrier, pawl assembly | 1 | All | |
| D51 | 040002 | Carrier, pawl, only | 1 | All | |
| D53 | 040067 | Pin, pawl carrier | 1 | All | |
| D52 | 040024 | Pawl, footchange | 1 | All | |
| — | 040049 | Circlip, for pawl | 1 | All | |
| — | 040066 | Spindle, ratchet | 1 | All | |
| -D55 | 040479 | Spring, return, gear change | 1 | All | |
| D54 | 040135 | Washer, return spring | 1 | All | |
| D56 | 040052 | Plate, stop, gear change | 1 | All | |
| D57 | 041400 | Screw, stop plate | 2 | All | |
| D58 | 014117 | Washer, shakeproof, for screw | 2 | All | |
| D59 | 041311 | Pedal, footchange | 1 | All | |
| D60 | 040086 | Rubber, footchange pedal | 1 | All | |
| D61 | 040105 | Bolt, for pedal | 1 | All | |
| D62 | 045062 | Washer, for bolt | 1 | All | |
| D63 | 000005 | Nut, for bolt | 1 | All | |
| D64 | 040051 | Indicator, gear | 1 | All | |
| D65 | 040137 | Screw, gear indicator | 1 | All | |
| D66 | 000012 | Washer, indicator screw | 1 | All | |
| D24 | 040034 | Plunger, camplate | 1 | All | |
| D25 | 040442 | Spring, for plunger | 1 | All | |
| CLUTCH | | | | | |
| — | 040478 | Clutch, complete | 1 | All | |
| E7 | 040366 | Centre, clutch | 1 | All | |
| E1 | 040584 | Plate, back, for clutch | 1 | All | |
| E4 | 040351 | Plate, race | 1 | All | |
| E2 | 040367 | Cage, roller | 1 | All | |
| E3 | 000075 | Roller, clutch | 15 | All | |
| E13 | 040359 | Sprocket, clutch | 1 | All | |
| E12 | 043443 | Centre, shock absorber | 1 | All | |
| E10 | 043445 <i>040362</i> | Plate, cover, shock absorber centre | 1 | All | |
| E11 | 043446 | Screw, cover plate | 3 | All | |
| E8 | 040386 | Rubber, large, for centre | 3 | All | |
| E9 | 040387 | Rubber, small, for centre | 3 | All | |
| E15 | 043191 | Plate, clutch, plain | 5 | All | |
| E14 | 043192 | Plate, clutch, friction, double sided | 5 | All | |
| E16 | 043193 | Plate, clutch, friction, single sided | 1 | All | |
| E17 | 043362 | Plate, pressure, bare | 1 | All | |
| E5 | 043441 | Stud, clutch spring | 3 | All | |
| E21 | 040358 | Spring, clutch | 3 | All | |
| E20 | 040388 | Cup, clutch spring | 3 | All | |
| E22 | 040389 | Nut, clutch spring adjustment | 3 | All | |
| E6 | 040356 | Nut, clutch stud to centre | 3 | All | |
| E18 | 040360 | Adjuster, in pressure plate | 1 | All | |
| E19 | 040376 | Nut, locking adjuster | 1 | All | |
| D28 | 040373 | Nut, retaining clutch | 1 | All | |
| D29 | 040374 | Washer lock, clutch nut | 1 | All | |

| PLATE No. | PART No. | DESCRIPTION | QTY. | MODEL | PRICE EACH |
|-------------------------------|----------|--|------|-------------------------------|------------|
| CLUTCH OPERATING PARTS | | | | | |
| D95 | 040607 | Rod, clutch | 1 | 88ss, 650 and Atlas | |
| D95 | 040084 | Rod, clutch | 1 | All G15 | |
| D90 | 040029 | Lever, operating | 1 | All | |
| D88 | 040059 | Body, operating lever | 1 | All | |
| D89 | 040003 | Ring, locking body | 1 | All | |
| D87 | 040031 | Ball, operating | 1 | All | |
| D91 | 040060 | Roller, operating | 1 | All | |
| D92 | 040065 | Sleeve, for roller | 1 | All | |
| D93 | 000457 | Screw, for roller | 1 | All | |
| D94 | 011846 | Nut, for screw | 1 | All | |
| KICKSTART | | | | | |
| D67 | 040477 | Axle, with bush | 1 | All | |
| — | 040146 | Bush, for axle | 1 | All | |
| D68 | 040017 | Pawl, for axle | 1 | All | |
| D71 | 040033 | Pin, for pawl | 1 | All | |
| D70 | 040044 | Spring for pawl | 1 | All | |
| D69 | 040069 | Plunger, for pawl | 1 | All | |
| D45 | 040042 | Stop, for axle | 1 | All | |
| D44 | 040071 | Cam, for axle | 1 | All | |
| — | 040041 | Rivet, for axle cam | 1 | All | |
| — | 040474 | Rivet, for axle stop | 1 | All | |
| D35 | 040023 | Nut, mainshaft, kickstart end | 1 | All | |
| D73 | 040101 | Crank, kickstart, with integral pin (Home) | 1 | 88ss and 650ss | |
| — | 040434 | Crank, kickstart (folding type) assembly (Home) | 1 | 650/99 and Atlas | |
| — | 040434 | Crank, kickstart (folding type) assembly (Export) | 1 | All | |
| — | 040429 | Crank, kickstart only (folding type) ... | 1 | All | |
| — | 040431 | Pin, pedal, for folding crank | 1 | All | |
| — | 040432 | Nut, domed, for pedal pin | 1 | All | |
| — | 040433 | Washer, spring, for pedal pin | 1 | All | |
| — | 000010 | Washer, plain, for pedal pin | 1 | All | |
| D74 | 040102 | Bolt, clamping crank to axle | 1 | All | |
| D72 | 040475 | Spring, return, kickstart | 1 | All | |
| FRAME | | | | | |
| H54 | 24990 | Frame, only | 1 | 88ss, 650ss, 650/99 and Atlas | |
| — | 18940 | Transfer, registered design | 1 | 88ss, 650ss, 650/99 and Atlas | |
| H62 | 20126 | Cover, gusset plate | 1 | 88ss, 650ss, 650/99 and Atlas | |
| H63 | 15844 | Tube assembly, rear engine fixing ... | 1 | 88ss, 650ss, 650/99 and Atlas | |
| H64 | 15893 | Rod, engine tube assembly | 1 | 88ss, 650ss, 650/99 and Atlas | |
| H66 | E5377 | Washer, for rod | 2 | 88ss, 650ss, 650/99 and Atlas | |
| H65 | 13459 | Nut, for rod | 2 | 88ss, 650ss, 650/99 and Atlas | |
| H55 | 21099 | Tube, distance, top, rear | 1 | 88ss, 650ss, 650/99 and Atlas | |

| PLATE No. | PART No. | DESCRIPTION | QTY. | MODEL | PRICE EACH |
|---------------------|----------|--|------|-------------------------------|------------|
| H56 | 21134 | Stud, distance tube | 1 | 88ss, 650ss, 650/99 and Atlas | |
| H57 | 000010 | Washer, for stud | 4 | 88ss, 650ss, 650/99 and Atlas | |
| H58 | E3224 | Nut, for stud | 2 | 88ss, 650ss, 650/99 and Atlas | |
| — | 030097 | Race, frame head lug | 2 | 88ss, 650ss, 650/99 and Atlas | |
| — | 000021 | Ball, steering <i>1/4" dia.</i> | 36 | 88ss, 650ss, 650/99 and Atlas | |
| — | 17429 | Washer, head lug bearing | 2 | 88ss, 650ss, 650/99 and Atlas | |
| — | 030211 | Frame, front only | 1 | All G15 | |
| — | 000051 | Nipple, grease | 1 | All G15 | |
| — | 023250 | Stud, seat lug | 1 | All G15 | |
| — | 016873 | Washer, seat lug stud | 2 | All G15 | |
| — | 000292 | Nut, seat lug stud | 2 | All G15 | |
| — | 000306 | Stud, rear engine lug, top and bottom | 2 | All G15 | |
| — | 000004 | Nut, engine lug stud | 4 | All G15 | |
| — | 026161 | Stud, rail junction lug | 1 | All G15 | |
| — | 000010 | Washer, junction stud | 2 | All G15 | |
| — | 000003 | Nut, junction stud | 2 | All G15 | |
| — | 030315 | Loop, rear frame | 1 | All G15 | |
| — | 022248 | Stud, frame loop, bottom | 1 | All G15 | |
| — | 029833 | Spacer, frame loop stud | 1 | All G15 | |
| — | 000009 | Washer, loop stud | 1 | All G15 | |
| — | 000002 | Nut, loop stud | 1 | All G15 | |
| SWINGING ARM | | | | | |
| H67 | 22586 | Arm, swinging, only | 1 | 88ss, 650ss, 650/99 and Atlas | |
| H68 | 20083 | Bearing, "Silent Bloc" | 2 | 88ss, 650ss, 650/99 and Atlas | |
| H70 | 15894 | Rod, swinging arm | 1 | 88ss, 650ss, 650/99 and Atlas | |
| H72 | 000008 | Washer, for rod | 2 | 88ss, 650ss, 650/99 and Atlas | |
| H71 | 15356 | Nut, for rod | 2 | 88ss, 650ss, 650/99 and Atlas | |
| — | 19264 | Adjuster, rear wheel | 2 | 88ss, 650ss, 650/99 and Atlas | |
| — | E3229 | Nut, wheel adjuster | 4 | 88ss, 650ss, 650/99 and Atlas | |
| H69 | 18578 | Tube, bearing spacer | 2 | 88ss, 650ss, 650/99 and Atlas | |
| — | 030001 | Arm, swinging, only | 1 | All G15 | |
| — | 010096 | Cap, bearing end, left hand | 1 | All G15 | |
| — | 010095 | Cap, bearing end, right hand | 1 | All G15 | |
| — | 000485 | Plug, oil screw | 1 | All G15 | |
| — | 000203 | Washer, for plug | 1 | All G15 | |
| — | 010098 | Gasket, bearing end cap | 2 | All G15 | |
| — | 010094 | Bearing, spoke | 1 | All G15 | |
| — | 012472 | Nipple, bearing spoke | 1 | All G15 | |
| — | 010093 | Washer, felt | 2 | All G15 | |
| — | 010116 | Tube, bearing | 1 | All G15 | |



| PLATE No. | PART No. | DESCRIPTION | QTY. | MODEL | PRICE EACH |
|-----------------------------|----------|---|------|-------------------------------|------------|
| — | 022879 | Pin, cotter, for tube | 1 | All G15 | |
| — | 014117 | Washer, shakeproof, for cotter pin ... | 1 | All G15 | |
| — | 000004 | Nut, cotter pin | 1 | All G15 | |
| — | 014746 | Sleeve, assembly, bushed | 2 | All G15 | |
| — | 21843 | Adjuster, rear wheel | 2 | All G15 | |
| — | 029245 | Nut, for adjuster | 2 | All G15 | |
| REAR SUSPENSION UNIT | | | | | |
| H73 | 24036 | Unit, rear suspension | 2 | 88ss, 650ss, 650/99 and Atlas | |
| — | 043312 | Spring, rear suspension, (solo) | 2 | 88ss, 650ss, 650/99 and Atlas | |
| — | 023372 | Spring, rear suspension, (sidecar) ... | 2 | 88ss, 650ss, 650/99 and Atlas | |
| H74 | 22674 | Bolt, top, rear suspension | 2 | 88ss, 650ss, 650/99 and Atlas | |
| H75 | 000010 | Washer, top bolt | 4 | 88ss, 650ss, 650/99 and Atlas | |
| H76 | E3224 | Nut, top bolt | 2 | 88ss, 650ss, 650/99 and Atlas | |
| H77 | 22655 | Bolt, bottom, rear suspension | 2 | 88ss, 650ss, 650/99 and Atlas | |
| H78 | 11796 | Washer, bottom bolt | 4 | 88ss, 650ss, 650/99 and Atlas | |
| H79 | E3223 | Nut, bottom bolt | 2 | 88ss, 650ss, 650/99 and Atlas | |
| H73 | 029612 | Unit, rear suspension | 2 | All G15P only | |
| H73 | 030248 | Unit, rear suspension | 2 | G15CS | |
| — | 029786 | Spring, rear suspension (solo) | 2 | All G15P only | |
| — | 029787 | Spring, rear suspension (sidecar)... .. | 2 | All G15P only | |
| H74 | 018648 | Bolt, top, rear suspension | 2 | All G15P only | |
| H74 | 012263 | Bolt, top, rear suspension | 2 | G15CS only | |
| H75 | 000010 | Washer, top bolt | 2 | All G15 | |
| — | 016712 | Nut, top bolt | 2 | All G15P only | |
| H77 | 029627 | Bolt, bottom, rear suspension | 2 | All G15 | |
| H78 | 000010 | Washer, bottom bolt | 4 | All G15 | |
| H79 | 000003 | Nut, bottom bolt | 2 | All G15 | |
| — | 22636 | Washer, bottom bolt (outer) | 2 | G15CS only | |
| CENTRE STAND | | | | | |
| H80 | 17175 | Stand, assembled | 1 | 88ss and 650ss | |
| H80 | 23882 | Stand, assembled | 1 | 650/99 and Atlas | |
| H81 | 16763 | Bolt, centre stand | 2 | 88ss, 650ss, 650/99 and Atlas | |
| H82 | 16764 | Nut, centre stand bolt | 2 | 88ss, 650ss, 650/99 and Atlas | |
| H83 | 24074 | Spring, for stand | 1 | 88ss, 650ss, 650/99 and Atlas | |
| H84 | 24078 | Clip, stand spring | 1 | 88ss, 650ss, 650/99 and Atlas | |
| — | 17591 | Stop, rubber, for stand | 1 | 88ss, 650ss, 650/99 and Atlas | |
| — | E5278 | Pin, rubber, stop | 1 | 88ss, 650ss, 650/99 and Atlas | |

| PLATE No. | PART No. | DESCRIPTION | QTY. | MODEL | PRICE EACH |
|-------------------|----------|--|------|-------------------------------|------------|
| H85 | 24151 | Stud, anchor | 1 | 88ss, 650ss, 650/99 and Atlas | |
| H86 | 000011 | Washer, for stud | 1 | 88ss, 650ss, 650/99 and Atlas | |
| H87 | E5456 | Washer, for stud | 1 | 88ss, 650ss, 650/99 and Atlas | |
| H88 | E3223 | Nut, for stud | 1 | 88ss, 650ss, 650/99 and Atlas | |
| — | 029490 | Stand, assembled | 1 | All G15P | |
| — | 022620 | Stand, assembled | 1 | G15CS only | |
| — | 014629 | Rod, centre stand | 1 | All G15 | |
| — | 000009 | Washer, for rod | 2 | All G15 | |
| — | 000002 | Nut, for rod | 2 | All G15 | |
| — | 014626 | Bush, centre stand | 2 | All G15 | |
| — | 014630 | Spacer, centre stand | 1 | All G15 | |
| — | 014627 | Spring, return | 1 | All G15 | |
| — | 029488 | Spring, stop | 1 | All G15 | |
| — | 012565 | Bolt, stop spring | 2 | All G15 | |
| — | 000039 | Washer, for Bolt | 2 | All G15 | |
| PROP STAND | | | | | |
| H89 | 18750 | Leg, prop stand | 1 | 88ss and 650ss | |
| H89 | 23877 | Leg, prop stand | 1 | 650/99 and Atlas | |
| H90 | 25175 | Lug, prop stand | 1 | 88ss, 650ss, 650/99 and Atlas | |
| H91 | 25176 | Lug, back, prop stand | 1 | 88ss, 650ss, 650/99 and Atlas | |
| H92 | 25179 | Stud, for lug and spring | 1 | 88ss, 650ss, 650/99 and Atlas | |
| H93 | 11824 | Nut, for stud | 1 | 88ss, 650ss, 650/99 and Atlas | |
| H94 | 16374 | Stud, for lug | 1 | 88ss, 650ss, 650/99 and Atlas | |
| H95 | E3224 | Nut, for stud | 1 | 88ss, 650ss, 650/99 and Atlas | |
| H96 | 16174 | Pin, fulcrum | 1 | 88ss, 650ss, 650/99 and Atlas | |
| H97 | 16176 | Spring, return | 1 | 88ss, 650ss, 650/99 and Atlas | |
| H99 | 014719 | Leg, prop stand | 1 | All G15 | |
| — | 014713 | Bolt, prop stand | 1 | All G15 | |
| — | 014109 | Nut, for bolt | 1 | All G15 | |
| — | 000049 | Pin, split, for bolt | 1 | All G15 | |
| — | 021261 | Spring, return | 1 | All G15 | |
| FOOTRESTS | | | | | |
| H34 | 18149A | <i>(Footpeg)</i> Hanger, assembled, left hand | 1 | 88ss, 650ss, 650/99 and Atlas | |
| H33 | 18772 | <i>(Footpeg)</i> Hanger, assembled, right hand | 1 | 88ss, 650ss, 650/99 and Atlas | |
| H36 | 14366 | Rod, footrest | 1 | 88ss, 650ss, 650/99 and Atlas | |
| H40 | 15641 | Spacer, for rod | 1 | 88ss, 650ss, 650/99 and Atlas | |

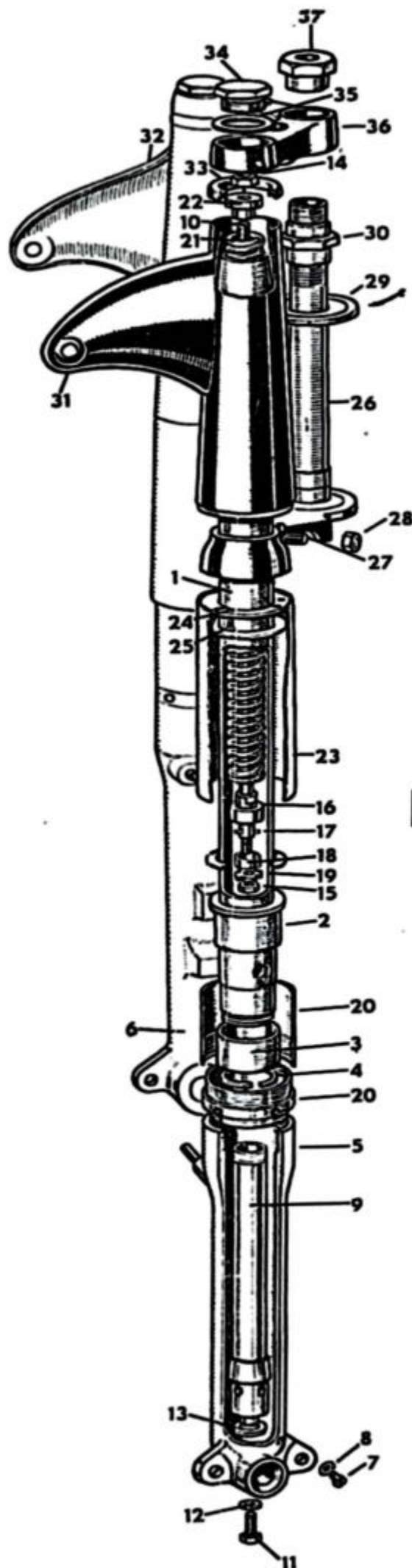


PLATE C

| PLATE No. | PART No. | DESCRIPTION | QTY. | MODEL | PRICE EACH |
|--------------------|----------|---|------|-------------------------------|------------|
| H39 | E5377 | Washer, for rod | 2 | 88ss, 650ss, 650/99 and Atlas | |
| H38 | E3220 | Nut, domed, for rod | 1 | 88ss, 650ss, 650/99 and Atlas | |
| H37 | E3238 | Nut, for rod | 1 | 88ss, 650ss, 650/99 and Atlas | |
| H41 | 18268 | End, serrated (right hand, on engine plate) | 1 | 88ss, 650ss, 650/99 and Atlas | |
| — | 018601 | Arm, footrest, left and right hand ... | 2 | All G15 | |
| — | 018604 | Rod, footrest | 1 | All G15 | |
| — | 000009 | Washer, for rod | 2 | All G15 | |
| — | 000002 | Nut, for rod | 2 | All G15 | |
| — | 030236 | Spacer, outer, left hand | 1 | All G15 | |
| — | 010911 | Spacer, outer, right hand | 1 | All G15 | |
| — | 030237 | Spacer (engine plates) | 1 | All G15 | |
| H35 | 19983 | Rubber, footrest | 2 | All | |
| FRONT FORKS | | | | | |
| — | 25258 | Forks, complete | 1 | 88ss, 650ss, 650/99 and Atlas | |
| — | 25291 | Forks, complete | 1 | All G15P | |
| — | 25259 | Forks, complete | 1 | G15CS only | |
| C5 | 030031 | Slider, fork, left hand | 1 | All | |
| C6 | 030030 | Slider, fork, right hand | 1 | All | |
| C7 | 000485 | Plug, drain, slider | 2 | All | |
| C8 | 000203 | Washer, for plug | 2 | All | |
| — | 16664 | Stud, pinch, for slider | 1 | All | |
| — | E3231 | Nut, pinch stud | 1 | All | |
| C9 | 20253 | Tube, damper | 2 | All except G15CS | |
| C9 | 030440 | Tube, damper | 2 | G15CS | |
| C10 | 15801 | Rod, damper | 2 | All except G15CS | |
| C10 | 017357 | Rod, damper | 2 | G15CS | |
| C11 | 14275 | Bolt, damper tube | 2 | All | |
| C12 | T1009 | Washer, damper tube | 2 | All | |
| C13 | T814 | Washer, damper tube | 2 | All | |
| C17 | 14119 | Peg, locating piston | 2 | All except G15CS | |
| C17 | 010721 | Peg, locating piston | 2 | G15CS | |
| C18 | 14118B | Cup, valve | 2 | All except G15CS | |
| C18 | 016304 | Cup, valve | 2 | G15CS | |
| C19 | 030584 | Ring, slotted, valve cup | 2 | All except G15CS | |
| — | 010719 | Seat, damper valve | 2 | G15CS | |
| C15 | E3231 | Nut, bottom, damper rod | 2 | All except G15CS | |
| C15 | 000005 | Nut, bottom, damper rod | 2 | G15CS | |
| C16 | 14605 | Cap, damper tube | 2 | All except G15CS | |
| — | 016072 | Sleeve, damper plunger | 2 | G15CS | |
| — | 016339 | Clip, plunger sleeve | 2 | G15CS | |
| C1 | 18482 | Tube, main | 2 | 88ss, 650ss, 650/99 and Atlas | |
| C1 | 030036 | Tube, main | 2 | All G15P | |
| C1 | 030457 | Tube, main | 2 | G15CS | |
| C34 | 16998 | Bolt, top, fork inner tube | 2 | All except G15CS | |
| C34 | 030446 | Bolt, top, fork inner tube | 2 | G15CS | |
| C35 | T320 | Washer, top bolt | 2 | All except G15CS | |
| C3 | T1048 | Bush, main tube | 2 | All | |
| C4 | 14298 | Circlip, main tube bush | 2 | All except G15CS | |

| PLATE No. | PART No. | DESCRIPTION | QTY. | MODEL | PRICE EACH |
|-----------------------|----------|---|------|-------------------------------|------------|
| C2 | T1055 | Bush, end fork | 2 | All | |
| — | 030456 | Nut, bush retaining | 2 | G15CS | |
| — | T1090 | Washer, bush retaining nut | 2 | G15CS | |
| — | 17713 | Seal, oil | 2 | All | |
| — | T1049 | Washer, locking, oil seal | 2 | All | |
| C20 | 030454 | Extension, slider | 2 | 88ss, 650ss, 650/99 and Atlas | |
| C20 | 030453 | Extension, slider | 2 | All G15 | |
| C21 | 18813 | Spring, main | 2 | All except G15CS | |
| C21 | 021789— | Spring, main | 2 | G15CS | |
| C22 | 25003 | Bush, locating fork spring | 2 | All | |
| C23 | 19307 | Tube, cover top, main spring | 2 | 88ss, 650ss, 650/99 and Atlas | |
| C23 | 030041 | Tube, cover, top, main spring | 2 | All G15 | |
| — | 021785 | Washer, cover tube (leather) | 2 | G15CS | |
| C24 | T831 | Washer, top cover tube | 2 | All | |
| C25 | T702 | Screw, cover tube washer | 6 | All | |
| C26 | 030026 | Crown and column assembly | 1 | All | |
| C27 | 16164 | Stud, pinch, fork crown | 2 | All | |
| C28 | 16187 | Nut, pinch stud | 2 | All | |
| C29 | 15628 | Cover, top bearing | 1 | All | |
| C30 | 15630 | Nut, bottom, steering column | 1 | All | |
| C31 | 24994 | Tube, top cover, left hand | 1 | All | |
| C32 | 24995 | Tube, top cover, right hand | 1 | All | |
| — | 25117 | Transfer, "Roadholder" | 2 | 88ss, 650ss, 650/99 and Atlas | |
| C33 | T597 | Washer, rubber, top cover tube | 2 | All | |
| C36 | 030027 | Clip, head | 1 | All | |
| — | 15627 | Washer, column tube | 1 | All | |
| C37 | 19490 | Nut, column tube | 1 | All | |
| — | 030517 | Transfer (Made in England) | 1 | All | |
| — | 030175, | Lock, steering, with two keys | 1 | All | |
| — | 030098 | Race, fork stem | 2 | All | |
| — | 19021A | Clip, handlebar | 2 | All | |
| — | 19437 | Screw, handlebar clip | 4 | All | |
| HANDLEBAR | | | | | |
| — | 030408 | Handlebar, bare | 1 | 88ss, 650ss and G15P | |
| — | 22460 | Handlebar, bare | 1 | 650/99 and Atlas | |
| — | 030398 | Handlebar, bare | 1 | G15CS | |
| FRONT MUDGUARD | | | | | |
| — | 24985D | Mudguard, front, bare | 1 | 88ss and 650ss | |
| — | 24986A | Mudguard, front, bare | 1 | 650/99 and Atlas | |
| — | 030101 | Mudguard, front, bare (Home) | 1 | G15P | |
| — | 030060 | Mudguard, front, bare (Export) | 1 | G15P | |
| — | 030252 | Mudguard, front, bare | 1 | G15CS | |
| — | 19291 | Stay, front mudguard | 4 | 88ss and 650ss | |
| — | 19291A | Stay, front mudguard (chrome) | 4 | 650/99 and Atlas | |
| — | 030360 | Stay, front mudguard, front position | 1 | 15CS | |
| — | 029564 | Stay, front mudguard, rear pos. (Home) | 1 | G15P | |
| — | 030065 | Stay, front mudguard, rear pos. (Export) | 1 | G15P | |
| — | 030362 | Stay, front mudguard, rear position | 1 | G15CS | |

| PLATE No. | PART No. | DESCRIPTION | QTY. | MODEL | PRICE EACH |
|-----------|----------|---------------------------------------|------|-------------------------------|------------|
| — | 24984 | Bridge, front mudguard | 1 | 88ss, 650ss, 650/99 and Atlas | |
| — | 030093 | Bridge, front mudguard (Home) | 1 | G15P | |
| — | 14481 | Bolt, mudguard stay | 4 | 88ss, 650ss, 650/99 and Atlas | |
| — | 18711 | Washer, stay bolt | 4 | 88ss, 650ss, 650/99 and Atlas | |
| — | E5379 | Washer, stay bolt | 4 | 88ss, 650ss, 650/99 and Atlas | |
| — | 13192 | Washer, packing, stay bolt | 4 | 88ss, 650ss, 650/99 and Atlas | |
| — | E3229 | Nut, stay bolt | 4 | 88ss, 650ss, 650/99 and Atlas | |
| — | E3798 | Bolt, stay to fork end | 4 | 88ss, 650ss, 650/99 and Atlas | |
| — | 11796 | Washer, for end bolt | 4 | 88ss, 650ss, 650/99 and Atlas | |
| — | 18709 | Bolt, centre stay | 2 | 88ss, 650ss, 650/99 and Atlas | |
| — | 18711 | Washer, centre stay bolt | 2 | 88ss, 650ss, 650/99 and Atlas | |
| — | E5379 | Washer, centre stay bolt | 2 | 88ss, 650ss, 650/99 and Atlas | |
| — | 11796 | Washer, centre stay bolt | 2 | 88ss, 650ss, 650/99 and Atlas | |
| — | E3229 | Nut, centre stay bolt | 2 | 88ss, 650ss, 650/99 and Atlas | |
| — | T1085 | Stud, stay to fork end | 4 | 88ss, 650ss, 650/99 and Atlas | |
| — | E5379 | Washer, for stud | 4 | 88ss, 650ss, 650/99 and Atlas | |
| — | E3229 | Nut, for stud | 4 | 88ss, 650ss, 650/99 and Atlas | |
| — | 18854 | Bolt, stay to slider | 2 | All G15P | |
| — | 18854 | Bolt, stay to slider | 4 | G15CS | |
| — | 11796 | Washer, for Bolt | 2 | All G15P | |
| — | 11796 | Washer, for bolt | 4 | G15CS | |
| — | 000070 | Bolt, stay to mudguard | 2 | All G15P | |
| — | 000070 | Bolt, stay to mudguard | 4 | G15CS | |
| — | 000012 | Washer, for bolt, plain | 2 | All G15P | |
| — | 000012 | Washer, for bolt, plain | 4 | G15CS | |
| — | 000191 | Washer, for bolt, spring | 2 | All G15P | |
| — | 000191 | Washer, for bolt, spring | 4 | G15CS | |
| — | 000005 | Nut, for bolt | 2 | All G15P | |
| — | 000005 | Nut, for bolt | 4 | G15CS | |
| — | 022632 | Bolt, mudguard bridge (Home) | 2 | G15P | |
| — | 022632 | Bolt, mudguard bridge (Export) | 8 | G15P | |
| — | 021579 | Washer, for bolt (Home) | 2 | G15P | |
| — | 021579 | Washer, for bolt (Export) | 8 | G15P | |
| — | 000005 | Nut, for bolt (Home) | 2 | G15P | |
| — | 000005 | Nut, for bolt (Export) | 8 | G15P | |
| — | T1085 | Stud, bridge to slider | 4 | All G15 | |
| — | E5379 | Washer, for stud | 4 | All G15 | |
| — | E3229 | Nut, for stud | 4 | All G15 | |

| PLATE No. | PART No. | DESCRIPTION | QTY. | MODEL | PRICE EACH |
|---------------------------|----------|------------------------------------|------|--------------------------------------|------------|
| REAR NUMBER PLATE | | | | | |
| — | 029431 | Plate, assembled | 1 | 88ss, 650ss, G15P (Home) | |
| — | 029427 | Plate, assembled | 1 | 650/99, Atlas, G15P (Export) & G15CS | |
| — | 000342 | Bolt, rear number plate | 1 | All | |
| — | 000172 | Washer, for bolt | 1 | All | |
| — | 014577 | Bolt, number plate bracket | 2 | All | |
| — | 000172 | Washer, for bolt | 2 | All | |
| — | 19429 | Grommet for cable | 2 | 88ss, 650ss, 650/99 and Atlas | |
| FRONT NUMBER PLATE | | | | | |
| — | 011835 | Plate number | 1 | 88ss and 650ss | |
| — | 18755 | Beading, for plate | 1 | 88ss and 650ss | |
| — | 011836 | Stud, front plate | 2 | 88ss and 650ss | |
| — | 000012 | Washer, for stud | 2 | 88ss and 650ss | |
| — | 000005 | Nut, for stud | 2 | 88ss and 650ss | |
| — | 000861 | Screw, fixing number plate | 2 | 88ss and 650ss | |
| REAR MUDGUARD | | | | | |
| — | 25060B | Mudguard, rear | 1 | 88ss, 650ss, 650/99 and Atlas | |
| — | 029522 | Mudguard, rear | 1 | G15P "M" | |
| — | 029523 | Mudguard, rear | 1 | G15P "N" | |
| — | 029810 | Mudguard, rear | 1 | G15CS "M", G15CS "N" | |
| — | 12342 | Bolt, mudguard bottom | 2 | 88ss, 650ss, 650/99 and Atlas | |
| — | E5379 | Washer, for bolt | 4 | 88ss, 650ss, 650/99 and Atlas | |
| — | E3229 | Nut, for bolt | 2 | 88ss, 650ss, 650/99 and Atlas | |
| — | 029533 | Bracket, rear mudguard | 2 | G15P | |
| — | 022250 | Bracket, rear mudguard | 2 | G15CS | |
| — | 000275 | Stud, mudguard bracket | 1 | G15CS | |
| — | 000011 | Washer, bracket stud | 2 | G15CS | |
| — | 000004 | Nut, bracket stud | 2 | G15CS | |
| — | 000070 | Bolt, bracket to mudguard | 2 | All G15 | |
| — | 000012 | Washer, small, for bolt | 2 | All G15 | |
| — | 000172 | Washer, large, for bolt | 2 | All G15 | |
| — | 000005 | Nut, for bolt | 2 | All G15 | |
| — | 22673 | Stud, support, mudguard | 2 | 88ss, 650ss, 650/99 and Atlas | |
| — | 22635 | Spacer, support stud | 4 | 88ss, 650ss, 650/99 and Atlas | |
| — | 22636 | Washer, for spacer | 2 | 88ss, 650ss, 650/99 and Atlas | |
| — | 000010 | Washer, for Stud | 4 | 88ss, 650ss, 650/99 and Atlas | |
| — | E3224 | Nut, for stud | 4 | 88ss, 650ss, 650/99 and Atlas | |
| — | 22634 | Handle, lifting, left hand | 1 | 88ss and 650ss | |
| — | 22634A | Handle, lifting, left hand | 1 | 650/99 and Atlas | |
| — | 22633 | Handle, lifting, right hand | 1 | 88ss and 650ss | |

| PLATE No. | PART No. | DESCRIPTION | QTY. | MODEL | PRICE EACH |
|----------------------------|----------|--|------|-------------------------------|------------|
| — | 22633A | Handle, lifting, right hand ... | 1 | 650/99 and Atlas | |
| — | 029440 | Tube, support, left hand ... | 1 | G15P | |
| — | 029441 | Tube, support, right hand ... | 1 | G15P | |
| — | 029446 | Spacer, support tube ... | 2 | G15P | |
| — | 14481 | Bolt, fixing, lifting handle ... | 4 | 88ss, 650ss, 650/99 and Atlas | |
| — | E5379 | Washer, for bolt ... | 8 | 88ss, 650ss, 650/99 and Atlas | |
| — | E3229 | Nut, for bolt ... | 4 | 88ss, 650ss, 650/99 and Atlas | |
| — | 030396 | Spacer, support tube ... | 2 | G15CS | |
| — | 025117 | Bolt, support tube ... | 2 | G15P | |
| — | 022549 | Washer, support tube, plain ... | 2 | G15P | |
| — | 000191 | Washer, support tube, spring ... | 2 | G15P | |
| — | 000005 | Nut, support tube bolt ... | 2 | G15P | |
| — | 030394 | Bridge, rear mudguard ... | 2 | G15CS | |
| — | 000070 | Bolt, front, mudguard bridge ... | 2 | G15CS | |
| — | 000012 | Washer, front bolt ... | 4 | G15CS | |
| — | 000005 | Nut, front bolt ... | 2 | G15CS | |
| — | 022632 | Screw, rear mudguard bridge ... | 2 | G15CS | |
| — | 000012 | Washer, for screw ... | 2 | G15CS | |
| — | 000005 | Nut, for screw ... | 2 | G15CS | |
| — | 030397 | Stay, rear mudguard support ... | 2 | G15CS | |
| — | 000010 | Washer, for stay bolt ... | 2 | G15CS | |
| — | 014807 | Bolt, for stay ... | 2 | G15CS | |
| — | 029814 | Clamp, rear mudguard ... | 1 | G15CS | |
| — | 029849 | Packing, for clamp ... | 1 | G15CS | |
| — | 000070 | Bolt, for clamp ... | 2 | G15CS | |
| — | 000012 | Washer, for clamp bolt ... | 2 | G15CS | |
| — | 000005 | Nut, for clamp bolt ... | 2 | G15CS | |
| — | 24671 | Transfer, rear mudguard ... | 1 | 88ss | |
| — | 24672 | Transfer, rear mudguard ... | 1 | 650ss | |
| — | 009189 | Transfer, rear mudguard ... | 1 | G15P "M" and G15CS "M" | |
| HANDLEBAR CONTROLS | | | | | |
| Brake and Air Lever | | | | | |
| — | 026320 | Lever, assembly, front brake and air ... | 1 | All except G15P | |
| — | 026238 | Lever, assembly, front brake and air ... | 1 | G15P | |
| — | 022715 | Lever, only, front brake ... | 1 | All except G15P | |
| — | 18-535 | Lever, only, front brake ... | 1 | G15P | |
| — | 18-812 | Body, for brake lever ... | 1 | All except G15P | |
| — | 18-816 | Body, for brake lever ... | 1 | G15P | |
| — | 18-087 | Screw, pivot, for lever ... | 1 | All | |
| — | 18-053 | Nut, pivot screw ... | 1 | All | |
| — | 12-556 | Lever, only, air ... | 1 | All | |
| — | 12-594 | Body, air lever ... | 1 | All | |
| — | 12-607 | Bolt, central, air lever ... | 1 | All | |
| — | 12-606 | Cap, air lever ... | 1 | All | |
| — | 12-033 | Washer, spring, air lever ... | 1 | All | |
| — | 11-013 | Screw, clamping body ... | 1 | All | |
| — | 11-014 | Screw, clamping body ... | 1 | All | |
| — | 023707 | Trunnion, brake lever ... | 1 | All | |

| PLATE No. | PART No. | DESCRIPTION | QTY. | MODEL | PRICE EACH |
|-----------|----------|--|------|--|------------|
| | | Clutch Lever | | | |
| — | 026258 | Lever, clutch assembly | 1 | All except G15P | |
| — | 026232 | Lever, clutch assembly | 1 | G15P | |
| — | 022714 | Lever, only | 1 | All except G15P | |
| — | 18-528 | Lever, only | 1 | G15P | |
| — | 18-814 | Body, only | 1 | All | |
| — | 18-087 | Screw, pivot, for lever | 1 | All | |
| — | 18-053 | Nut, pivot screw | 1 | All | |
| — | 12-595 | Clamp, lever body | 1 | All | |
| — | 11-014 | Screw, body clamp | 2 | All | |
| — | 023707 | Trunnion, clutch lever | 1 | All | |
| | | Twist Grip | | | |
| — | 016658 | Twist grip, assembled | 1 | All | |
| — | 16-060 | Body, top half | 1 | All | |
| — | 16-061 | Body, bottom half | 1 | All | |
| — | 16-091 | Rotor, only | 1 | All | |
| — | 11-013 | Screw, long, clamping halves | 1 | All | |
| — | 11-014 | Screw, short, clamping halves | 1 | All | |
| — | 16-008 | Spring, friction | 1 | All | |
| — | 16-009 | Screw, friction spring | 1 | All | |
| — | 16-010 | Nut, lock, for screw | 1 | All | |
| — | 026476 | Abutment, slotted | 1 | All | |
| — | 16-070 | Grip, plastic, only | 1 | All | |
| — | 16-069 | Grip, dummy, plastic (023740) | 1 | All | |
| | | BRAKE CABLE | | | |
| — | 24987 | Cable, assembled, front brake | 1 | 88ss, 650ss and G15P (Home) | |
| — | 25038 | Cable, assembled, front brake | 1 | 650/99, Atlas, G15P (Export) & G15CS | |
| — | 25583 | Adjuster, brake cable | 1 | All | |
| — | 25584 | Nut, lock, for adjuster | 1 | All | |
| — | 14759 | Clip, "U", for cable | 1 | All | |
| — | 042764 | Plastic sleeve, 4 $\frac{3}{8}$ " | 1 | All | |
| | | CLUTCH CABLE | | | |
| — | 25035 | Cable, assembled, clutch | 1 | 88ss and 650ss | |
| — | 25036 | Cable, assembled, clutch | 1 | 650/99 and Atlas | |
| — | 026250 | Cable, assembled, clutch | 1 | G15P (Home) | |
| — | 023753 | Cable, assembled, clutch | 1 | G15P (Export) and G15CS | |
| — | 042856 | Adjuster, clutch cable | 1 | All | |
| — | 011373 | Nut, lock, for adjuster | 1 | All | |
| | | AIR CABLE | | | |
| — | 25033 | Cable, assembled, air (carburettor end)... | 2 | All | |
| — | 25008 | Cable, assembled, air (handlebar end) ... | 1 | 88ss, 650ss and G15P (Home) | |
| — | 028239 | Cable, assembled, air (handlebar end) ... | 1 | G15P (Export), G15CS, 650/99 and Atlas | |
| — | 019824 | Box, junction, for cable | 1 | All | |

| PLATE No. | PART No. | DESCRIPTION | QTY. | MODEL | PRICE EACH |
|----------------------------------|----------|---|------|--|------------|
| — | 018956 | Adjuster, midway, for cable | 1 | All | |
| THROTTLE CABLE | | | | | |
| — | 028238 | Cable, assembled, throttle (carburetter end) | 2 | All | |
| — | 25008 | Cable, assembled, throttle (handlebar end) | 1 | 88ss, 650ss and G15P (Home) 650/99, Atlas, G15P (Export) and G15CS | |
| — | 028239 | Cable, assembled, throttle (handlebar end) | 1 | | |
| — | 019824 | Box, junction, for cable | 1 | All | |
| — | 018956 | Adjuster, midway, for cable | 1 | All | |
| OIL PIPES | | | | | |
| — | 19457 | Junction block and oil pipes, assembled... | 1 | 88ss, 650ss, 650/99 and Atlas | |
| — | 030300 | Junction block and oil pipes, assembled... | 1 | All G15 | |
| — | T2100 | Gasket, junction block | 1 | All | |
| — | E5377 | Washer, junction block stud | 1 | 88ss, 650ss, 650/99 and Atlas | |
| — | T2101 | Nut, for stud | 1 | 88ss, 650ss, 650/99 and Atlas | |
| — | 030448 | Bolt, junction block | 1 | All G15 | |
| — | 19452 | Pipe, oil feed, and return | 2 | 88ss, 650ss, 650/99 and Atlas | |
| — | 029845 | Pipe, oil feed, engine end | 1 | All G15 | |
| — | 000950 | Hose, oil feed pipe, 11 $\frac{3}{8}$ " | 1 | All G15 | |
| — | 023376 | Ferrule, for hose | 2 | All G15 | |
| — | 000950 | Hose, oil return, 11" | 1 | All G15 | |
| — | 023376 | Ferrule, for hose | 2 | All G15 | |
| — | 000951 | Sleeve, plastic, for oil pipes, 5" | 1 | All G15 | |
| TWIN SEAT AND SINGLE SEAT | | | | | |
| — | 23926 | Twin seat, only | 1 | 88ss, 650ss, 650/99 and Atlas | |
| — | 029449 | Twin seat, only | 1 | G15CS | |
| — | 029826 | Seat, single | 1 | G15P | |
| — | 029858 | Bracket, single seat | 2 | G15P | |
| — | 000070 | Bolt, for bracket | 2 | G15P | |
| — | 000012 | Washer, bracket bolt | 2 | G15P | |
| — | 21851 | Bush, rubber, for seat | 2 | 88ss, 650ss, 650/99 and Atlas | |
| — | 21852 | Button, rubber, for seat | 2 | 88ss, 650ss, 650/99 and Atlas | |
| — | 23151 | Washer, rubber, locating peg | A/R | 88ss, 650ss, 650/99 and Atlas | |
| — | 23151A | Washer, rubber, locating peg | A/R | 88ss, 650ss, 650/99 and Atlas | |
| — | 23265 | Fastener, Dzus | 1 | 88ss, 650ss, 650/99 and Atlas | |
| — | 23264 | Grommet, for fastener | 1 | 88ss, 650ss, 650/99 and Atlas | |

| PLATE No. | PART No. | DESCRIPTION | QTY. | MODEL | PRICE EACH |
|--------------------|----------|---|------|-------------------------------|------------|
| — | 23153 | Washer, rubber, for fastener | 1 | 88ss, 650ss, 650/99 and Atlas | |
| — | 023251 | Screw, fixing seat, front | 2 | 15CS | |
| — | 000011 | Washer, for screw | 2 | 15CS | |
| — | 022083 | Nut, for screw | 2 | 15CS | |
| PETROL TANK | | | | | |
| — | 22630A | Tank, bare | 1 | 88ss, 650ss, 650/99 and Atlas | |
| — | 029655 | Tank, bare | 1 | G15P "M" | |
| — | 030310 | Tank, bare | 1 | G15P "N" | |
| — | 030365 | Tank, bare | 1 | G15CS "M" | |
| — | 030368 | Tank, bare | 1 | G15CS "N" | |
| — | 22714 | Strip, styling, left hand | 1 | 88ss, 650ss, 650/99 and Atlas | |
| — | 22713 | Strip, styling, right hand | 1 | 88ss, 650ss, 650/99 and Atlas | |
| — | 22755 | Screw, fixing strip | 6 | 88ss, 650ss, 650/99 and Atlas | |
| — | 028241 | Motif, left hand | 1 | G15P "M" | |
| — | 028242 | Motif, right hand | 1 | G15P "M" | |
| — | 027026 | Motif, left hand and right hand | 2 | G15CS "M" | |
| — | 18486 | Transfer, left hand and right hand | 2 | G15CS "N" | |
| — | 027027 | Seating, for motif | 2 | G15CS "M" | |
| — | 028441 | Screw, for motif, front | 2 | G15P "M" | |
| — | 028452 | Screw, for motif, rear | 2 | G15P "M" | |
| — | 000153 | Screw, for motif | 4 | G15CS "M" | |
| — | 22722 | Knee grip, left hand | 1 | 88ss, 650ss, 650/99 and Atlas | |
| — | 042889 | Knee grip, left hand | 1 | G15P | |
| — | 22721 | Knee grip, right hand | 1 | 88ss, 650ss, 650/99 and Atlas | |
| — | 042890 | Knee grip, right hand | 1 | G15P | |
| — | 013325 | Cap, filler | 1 | All except G15CS | |
| — | 014034 | Cap, filler | 1 | G15CS | |
| — | 013936 | Pin, split, filler cap | 1 | G15CS | |
| — | 23305 | Tap, petrol | 1 | 88ss, 650ss, 650/99 and Atlas | |
| — | 048529 | Tap, petrol, main and reserve | 1 | G15P | |
| — | 026566 | Tap, petrol, main | 1 | G15CS | |
| — | 024201 | Tap, petrol, reserve | 1 | G15CS | |
| — | E5264 | Washer, petrol tap | 1 | 88ss, 650ss, 650/99 and Atlas | |
| — | 13786 | Washer, petrol tap | A/R | 88ss, 650ss, 650/99 and Atlas | |
| — | 021387 | Adaptor, petrol tap | 2 | G15CS | |
| — | 000183 | Washer, for adaptor | 2 | G15CS | |
| — | 22265 | Pipe, petrol feed | 1 | 88ss, 650ss, 650/99 and Atlas | |
| — | 000908 | Pipe, petrol feed, 10" | 1 | G15P | |
| — | 000908 | Pipe, petrol feed, 6½", left hand | 1 | G15CS | |
| — | 000908 | Pipe, petrol feed, 9¾", right hand | 1 | G15CS | |
| — | 021844 | "T" piece, petrol pipe | 1 | G15CS | |
| — | 000575 | Plug, drain | 1 | G15P | |
| — | 000183 | Washer, drain plug | 1 | G15P | |

| PLATE No. | PART No. | DESCRIPTION | QTY. | MODEL | PRICE EACH |
|-----------------|----------|---|------|-------------------------------|------------|
| — | 22801 | Bolt, fixing tank, front | 1 | 88ss, 650ss, 650/99 and Atlas | |
| — | 22082 | Washer, rubber, for bolt, top | 2 | 88ss, 650ss, 650/99 and Atlas | |
| — | E6743 | Washer, rubber, for bolt, bottom | 2 | 88ss, 650ss, 650/99 and Atlas | |
| — | E6742 | Cup, steel, for rubber | 2 | 88ss, 650ss, 650/99 and Atlas | |
| — | 10914 | Washer, steel, for cups | 2 | 88ss, 650ss, 650/99 and Atlas | |
| — | 24979 | Bolt, fixing tank, front | 1 | 88ss, 650ss, 650/99 and Atlas | |
| — | 22764 | Ring, rubber, rear fixing | 1 | 88ss, 650ss, 650/99 and Atlas | |
| — | 16237 | Rubber, frame mounting | 1 | 88ss, 650ss, 650/99 and Atlas | |
| — | 027161 | Bolt, fixing tank, front | 2 | All G15 | |
| — | 021453 | Washer, front bolt | 2 | All G15 | |
| — | 021174 | Rubber, front bolt | 2 | All G15 | |
| — | 000177 | Washer, inner, front bolt | 2 | All G15 | |
| — | 014995 | Rubber, buffer, front bolt | 2 | All G15 | |
| — | 016845 | Nut, front bolt | 2 | All G15 | |
| — | 027138 | Rubber, tank support, rear | 1 | All G15 | |
| — | 026359 | Rubber, tank support, rear, thin | 1 | All G15 | |
| — | 018220 | Clip, rubber, tank support, rear | 2 | All G15 | |
| — | 027137 | Strap, petrol tank fixing, rear | 1 | All G15 | |
| — | 25101 | Transfer, crossed flags | 1 | 650/99 and Atlas | |
| — | 24298 | Transfer, "750 Atlas" | 1 | Atlas | |
| OIL TANK | | | | | |
| — | 24304 | Tank, only | 1 | 88ss, 650ss, 650/99 and Atlas | |
| — | 030286 | Tank, only | 1 | G15P | |
| — | 030287 | Tank, only | 1 | G15CS "M" | |
| — | 030288 | Tank, only | 1 | G15CS "N" | |
| — | 029593 | Cover, oil tank | 1 | G15P | |
| — | 029594 | Cover, oil tank | 1 | G15CS "M" | |
| — | 030289 | Cover, oil tank | 1 | G15CS "N" | |
| — | 022632 | Screw, for cover | 2 | All G15 | |
| — | 000012 | Washer, plain, for screw | 2 | All G15 | |
| — | 000203 | Washer, fibre, for screw | 2 | All G15 | |
| — | 13765 | Plug, drain | 1 | 88ss, 650ss, 650/99 and Atlas | |
| — | 012019 | Plug, drain | 1 | All G15 | |
| — | 000200 | Washer, drain plug | 1 | All | |
| — | 025352 | Cap, filler, oil tank | 1 | All | |
| — | 21467 | Transfer (Oil Level) | 1 | 88ss, 650ss, 650/99 and Atlas | |
| — | 023277 | Transfer (Top Level) | 1 | G15P | |
| — | 030352 | Transfer (Top Level) | 1 | G15CS | |
| — | 023279 | Transfer (Low Level) | 1 | G15P | |
| — | 030353 | Transfer (Low Level) | 1 | G15CS | |
| — | 030461 | Transfer (Oil Recommendation) | 1 | All G15 | |
| — | 24309 | Pipe, breather, oil tank | 1 | 88ss, 650ss, 650/99 and Atlas | |

| PLATE No. | PART No. | DESCRIPTION | QTY. | MODEL | PRICE EACH |
|--------------------------|----------|---|------|-------------------------------|------------|
| — | 19379 | Filter union, assembled | 1 | 88ss, 650ss, 650/99 and Atlas | |
| — | E6640 | Washer, filter union | 1 | 88ss, 650ss, 650/99 and Atlas | |
| — | 19380 | Adaptor, oil return pipe | 1 | 88ss, 650ss, 650/99 and Atlas | |
| — | 13786 | Washer, for adaptor | 2 | 88ss, 650ss, 650/99 and Atlas | |
| — | 000895 | Hose, vent pipe, 18" | 1 | All G15 | |
| — | 048515 | Filter, feed pipe | 1 | All G15 | |
| — | 016170 | Washer, filter | 1 | All G15 | |
| — | 22475 | Bolt, tank fixing, top | 1 | 88ss, 650ss, 650/99 and Atlas | |
| — | 22715 | Grommet, top bolt | 1 | 88ss, 650ss, 650/99 and Atlas | |
| — | 22716 | Spacer, top bolt | 1 | 88ss, 650ss, 650/99 and Atlas | |
| — | E5456 | Washer, top bolt | 3 | 88ss, 650ss, 650/99 and Atlas | |
| — | E3223 | Nut, top bolt | 1 | 88ss, 650ss, 650/99 and Atlas | |
| — | 029832 | Bolt, tank fixing, top, front | 1 | All G15 | |
| — | 000011 | Washer, for bolt | 1 | All G15 | |
| — | 13053 | Stud, fixing tank, bottom | 2 | 88ss, 650ss, 650/99 and Atlas | |
| — | E5456 | Washer, for stud | 2 | 88ss, 650ss, 650/99 and Atlas | |
| — | E3223 | Nut, for stud | 2 | 88ss, 650ss, 650/99 and Atlas | |
| PILLION FOOTRESTS | | | | | |
| H43 | 029333 | Bar, pillion footrest | 2 | 88ss, 650ss, 650/99 and Atlas | |
| H44 | 000343 | Bolt, pillion footrest bar | 2 | 88ss, 650ss, 650/99 and Atlas | |
| — | 000005 | Nut, for bolt | 2 | 88ss, 650ss, 650/99 and Atlas | |
| — | 030321 | Lug, pillion, footrest | 2 | 88ss, 650ss, 650/99 and Atlas | |
| — | 000010 | Washer, footrest lug | 2 | 88ss, 650ss, 650/99 and Atlas | |
| — | 23870 | Nut, pillion lug | 2 | 88ss, 650ss, 650/99 and Atlas | |
| H45 | 22574 | Stud, pillion rest and silencer fixing | 2 | 88ss, 650ss, 650/99 and Atlas | |
| H48 | 042569 | Rubber, pillion footrest | 2 | 88ss, 650ss, 650/99 and Atlas | |
| FRONT CHAINCASE | | | | | |
| — | 23250 | Chaincase, inner, assembled | 1 | 88ss, 650ss, 650/99 and Atlas | |
| — | 030242 | Chaincase, inner, assembled | 1 | All G15 | |
| — | 20914 | Chaincase, outer, only | 1 | 88ss and 650ss | |
| — | 20914A | Chaincase, outer, only | 1 | 650/99 and Atlas | |

| PLATE No. | PART No. | DESCRIPTION | QTY. | MODEL | PRICE EACH |
|------------------------|----------|--------------------------------------|------|-------------------------------|------------|
| — | 024012 | Chaincase, outer, only | 1 | All G15 | |
| — | 20939 | Washer, spigot, chaincase | 1 | 88ss, 650ss, 650/99 and Atlas | |
| — | 20942 | Pin, fixing | 3 | 88ss, 650ss, 650/99 and Atlas | |
| — | 24945 | Grommet, chaincase | 1 | 88ss | |
| — | 24945 | Grommet, chaincase | 2 | 650ss, 650/99 & Atlas | |
| H19 | 20937 | Stud, support | 1 | 88ss, 650ss, 650/99 and Atlas | |
| — | 000011 | Washer, support stud | 2 | 88ss, 650ss, 650/99 and Atlas | |
| H20 | E3223 | Nut, support stud | 1 | 88ss, 650ss, 650/99 and Atlas | |
| — | 16247 | Nut, support stud | 1 | 88ss, 650ss, 650/99 and Atlas | |
| — | 13185 | Washer, sealing chaincase halves ... | 1 | 88ss, 650ss, 650/99 and Atlas | |
| — | 042055 | Washer, felt, footrest tube | 1 | 88ss, 650ss, 650/99 and Atlas | |
| — | 13765 | Plug, drain | 1 | 88ss 650ss 650/99 and Atlas | |
| — | 000200 | Washer, drain plug | 1 | 88ss 650ss 650/99 and Atlas | |
| — | 14837 | Cover, inspection | 1 | 88ss 650ss 650/99 and Atlas | |
| — | 24320 | Washer, inspection cover | 1 | 88ss 650ss 650/99 and Atlas | |
| — | E6055 | Nut, attachment | 1 | 88ss 650ss 650/99 and Atlas | |
| — | E6056 | Washer, attachment nut | 1 | 88ss 650ss, 650/99 and Atlas | |
| — | 24322 | Washer, sealing, outer | 1 | 88ss, 650ss, 650/99 and Atlas | |
| — | 042040 | Cap, inspection | 2 | All G15 | |
| — | 042025 | Washer, inspection cap | 2 | All G15 | |
| — | 030243 | Spacer (behind chaincase) | 1 | All G15 | |
| — | 019226 | Screw, fixing chaincase | 3 | All G15 | |
| — | 000484 | Screw, front half chaincase | 14 | All G15 | |
| — | 025037 | Gasket, chaincase outer cover | 1 | All G15 | |
| — | 012019 | Plug, drain | 1 | All G15 | |
| — | 000200 | Washer, drain plug | 1 | All G15 | |
| — | 17731 | Transfer, "Oil Bath" | 1 | 88ss, 650ss, 650/99 and Atlas | |
| — | 030461 | Transfer, "Oil Recommendation" ... | 1 | 88ss, 650ss, 650/99 and Atlas | |
| REAR CHAINGUARD | | | | | |
| — | 21832 | Chainguard (top run) | 1 | 88ss, 650ss, 650/99 and Atlas | |
| — | 21832A | Chainguard (top run) | 1 | 88ss, 650ss, 650/99 and Atlas | |
| — | 22022B | Bolt, fixing chainguard | 1 | 88ss, 650ss, 650/99 and Atlas | |
| — | 19435 | Washer, chainguard bolt | 1 | 88ss, 650ss, 650/99 and Atlas | |

| PLATE No. | PART No. | DESCRIPTION | QTY. | MODEL | PRICE EACH |
|----------------------------------|----------|---------------------------------------|------|-------------------------------|------------|
| — | T2221 | Washer, chainguard bolt (packing) ... | 2 | 88ss, 650ss, 650/99 and Atlas | |
| — | 23574 | Nut, chainguard bolt ... | 1 | 88ss, 650ss, 650/99 and Atlas | |
| — | 22022A | Bolt, chainguard ... | 1 | 88ss, 650ss, 650/99 and Atlas | |
| — | 029469 | Chainguard (top run) ... | 1 | All G15 | |
| — | 000371 | Bolt, fixing, front ... | 1 | All G15 | |
| — | 000011 | Washer, for bolt ... | 1 | All G15 | |
| — | 000374 | Bolt, fixing, rear ... | 1 | All G15 | |
| — | 000011 | Washer, for bolt ... | 1 | All G15 | |
| REAR CHAINCASE (OPTIONAL) | | | | | |
| — | 19734K | Chaincase, top, assembled ... | 1 | 88ss, 650ss, 650/99 and Atlas | |
| — | 19735K | Chaincase, bottom, assembled ... | 1 | 88ss, 650ss, 650/99 and Atlas | |
| — | 22022B | Bolt, fixing, front ... | 1 | 88ss, 650ss, 650/99 and Atlas | |
| — | 22022A | Bolt, fixing, rear ... | 1 | 88ss, 650ss, 650/99 and Atlas | |
| — | 19435 | Washer, fixing bolt ... | 1 | 88ss, 650ss, 650/99 and Atlas | |
| — | T2221 | Washer, fixing bolt (packing) ... | 2 | 88ss, 650ss, 650/99 and Atlas | |
| — | 22135 | Grommet, inspection ... | 1 | 88ss, 650ss, 650/99 and Atlas | |
| — | 030009 | Chaincase, top, assembled ... | 1 | All G15 | |
| — | 030012 | Chaincase, bottom, assembled ... | 1 | All G15 | |
| — | 000371 | Bolt, chaincase ... | 1 | All G15 | |
| — | 000374 | Bolt, chaincase ... | 1 | All G15 | |
| — | 000011 | Washer, chaincase bolt ... | 2 | All G15 | |
| TOOL BOX AND TOOL TRAY | | | | | |
| H98 | 22638A | Tool tray, assembled ... | 1 | 88ss, 650ss, 650/99 and Atlas | |
| — | 12342 | Bolt, fixing tool tray ... | 3 | 88ss, 650ss, 650/99 and Atlas | |
| — | E5379 | Washer, tool tray bolt ... | 5 | 88ss, 650ss, 650/99 and Atlas | |
| — | 17698 | Washer, tool tray bolt ... | 1 | 88ss, 650ss, 650/99 and Atlas | |
| — | E3229 | Nut, tool tray bolt ... | 3 | 88ss, 650ss, 650/99 and Atlas | |
| — | 029550 | Tool box, less lid ... | 1 | G15P | |
| — | 029551 | Tool box, less lid ... | 1 | G15CS "M" | |
| — | 030257 | Tool box, less lid ... | 1 | G15CS "N" | |
| — | 048300 | Lid, tool box ... | 1 | G15P | |
| — | 048301 | Lid, tool box ... | 1 | G15CS "M" | |
| — | 048425 | Lid, tool box ... | 1 | G15CS "N" | |
| — | 014511 | Screw, tool box lid ... | 1 | All G15 | |
| — | 000012 | Washer, lid screw ... | 1 | All G15 | |

| PLATE No. | PART No. | DESCRIPTION | QTY. | MODEL | PRICE EACH |
|--------------------------------|----------|---|------|-------------------------------|------------|
| — | 011373 | Nut, lid screw | 2 | All G15 | |
| — | 029832 | Bolt, top, fixing | 1 | All G15 | |
| — | 000011 | Washer, top bolt | 1 | All G15 | |
| — | 000070 | Bolt, rear fixing | 1 | All G15 | |
| — | 000012 | Washer, rear bolt | 1 | All G15 | |
| — | 000005 | Nut, rear bolt | 1 | All G15 | |
| BATTERY BOX AND CARRIER | | | | | |
| — | 22594 | Body, battery box, assembled | 1 | 88ss, 650ss, 650/99 and Atlas | |
| — | 19189 | Lid, battery box | 1 | 88ss, 650ss, 650/99 and Atlas | |
| — | 19086 | Platform, battery | 1 | 88ss, 650ss, 650/99 and Atlas | |
| — | 19093 | "U" bolt, battery | 1 | 88ss, 650ss, 650/99 and Atlas | |
| — | 19101 | Strap, retaining | 1 | 88ss, 650ss, 650/99 and Atlas | |
| — | 17707 | Washer, "U" bolt | 2 | 88ss, 650ss, 650/99 and Atlas | |
| — | E3221 | Nut, "U" bolt | 2 | 88ss, 650ss, 650/99 and Atlas | |
| — | 19195 | Knob, box lid | 2 | 88ss, 650ss, 650/99 and Atlas | |
| — | 11796 | Washer, for knob | 2 | 88ss, 650ss, 650/99 and Atlas | |
| — | 17735 | Pin, split, for knob | 2 | 88ss, 650ss, 650/99 and Atlas | |
| — | 15689 | Grommet, battery box | 1 | 88ss, 650ss, 650/99 and Atlas | |
| — | 14481 | Bolt, top, fixing | 1 | 88ss, 650ss, 650/99 and Atlas | |
| — | E5379 | Washer, top bolt | 2 | 88ss, 650ss, 650/99 and Atlas | |
| — | E3229 | Nut, top bolt | 1 | 88ss, 650ss, 650/99 and Atlas | |
| — | 19092 | Bolt, bottom fixing | 2 | 88ss, 650ss, 650/99 and Atlas | |
| — | E5456 | Washer, bottom bolt | 2 | 88ss, 650ss, 650/99 and Atlas | |
| — | 17698 | Washer, shakeproof, bottom bolt | 1 | 88ss, 650ss, 650/99 and Atlas | |
| — | 19201 | Platform, battery box and oil tank | 1 | 88ss, 650ss, 650/99 and Atlas | |
| — | 19212 | Mat, for platform | 1 | 88ss, 650ss, 650/99 and Atlas | |
| — | 14481 | Bolt, fixing platform | 4 | 88ss, 650ss, 650/99 and Atlas | |
| — | E5379 | Washer, for bolt | 8 | 88ss, 650ss, 650/99 and Atlas | |
| — | E3229 | Nut, for bolt | 4 | 88ss, 650ss, 650/99 and Atlas | |
| — | 030094 | Carrier, battery, assembled | 1 | All G15 | |
| — | 014577 | Bolt, carrier/tool box | 1 | All G15 | |

| PLATE No. | PART No. | DESCRIPTION | QTY. | MODEL | PRICE EACH |
|--------------------|-----------|---|------|-----------------|------------|
| — | 045062 | Washer, for bolt | 2 | All G15 | |
| — | 000005 | Nut, for bolt | 1 | All G15 | |
| — | 000368 | Bolt, fixing, top, rear | 1 | All G15 | |
| — | 000011 | Washer, top, rear bolt | 1 | All G15 | |
| — | 000004 | Nut, top, rear bolt | 1 | All G15 | |
| — | 024218 | Bolt, fixing, front | 2 | All G15 | |
| — | 000012 | Washer, front bolt | 4 | All G15 | |
| — | 000005 | Nut, front bolt | 2 | All G15 | |
| — | 048454 | Rubber, battery carrier | 1 | All G15 | |
| — | 030056 | Strap, battery carrier | 1 | All G15 | |
| — | 028044 | Pin, battery strap | 1 | All G15 | |
| FRONT WHEEL | | | | | |
| — | 25004 | Wheel, complete, less tyre and tube ... | 1 | All except G15P | |
| — | 030518 | Wheel, complete, less tyre and tube ... | 1 | G15P (Home) | |
| — | 25292 | Wheel, complete, less tyre and tube ... | 1 | G15P (Export) | |
| — | S12-2/428 | Wheel, bare | 1 | All except G15P | |
| — | 030519 | Wheel, bare | 1 | G15P (Home) | |
| — | 25293 | Wheel, bare | 1 | G15P (Export) | |
| — | 18350 | Rim, only, WM2-19 | 1 | All except G15P | |
| — | 24872 | Rim, only, WM2-18 | 1 | G15P (Home) | |
| — | 23319 | Rim, only, WM3-18 | 1 | G15P (Export) | |
| — | 20063 | Spoke, long head | 20 | All except G15P | |
| — | 23331 | Spoke, long head | 20 | G15P | |
| — | 20061 | Spoke, short head | 20 | All except G15P | |
| — | 23332 | Spoke, short head | 20 | G15P | |
| — | 17717 | Nipple, for spoke | 40 | All | |
| F21 | 19664 | Shell, only, front hub | 1 | All | |
| F22 | 040100 | Bearing, right side | 1 | All | |
| F18 | 17721 | Bearing, left side | 1 | All | |
| F23 | 16783 | Spacer, for bearing | 1 | All | |
| F24 | E6888 | Ring, locking bearing | 1 | All | |
| F16 | E6885 | Washer, felt | 2 | All | |
| F17 | E6889 | Ring, retaining | 1 | All | |
| F15 | 19719 | Washer, oil retaining | 1 | All | |
| F25 | 18551 | Cover, dust | 1 | All | |
| F19 | 19646 | Spacer, assembled, bearing | 1 | All | |
| F27 | 030055 | Spindle, front hub | 1 | All | |
| F3 | E4768 | Nut, hub spindle | 1 | All | |
| F2 | 50257 | Plate, cover, front brake | 1 | All | |
| F20 | 50249 | Cam, brake shoe | 1 | All | |
| F8 | 18502 | Shoe, front brake, with lining | 2 | All | |
| F10 | 16782 | Lining, brake shoe | pair | All | |
| F9 | E5061 | Rivet, brake shoe lining | set | All | |
| F14 | E5832 | Spring, return, brake shoe | 2 | All | |
| F11 | 14454 | Plate, pivot retaining | 1 | All | |
| F12 | 14506 | Washer, tab, for plate | 1 | All | |
| F13 | 12342 | Bolt, for plate | 2 | All | |
| F4 | 20052 | Lever, expanding | 1 | All | |
| — | E3255 | Pin, clevis, for lever | 1 | All | |
| — | 17735 | Pin, split, for clevis | 1 | All | |
| F6 | E5455 | Washer, for lever | 1 | All | |
| F5 | 18942 | Nut, for lever | 1 | All | |
| — | E5944A | Washer, packing, brake plate | A/R | All | |

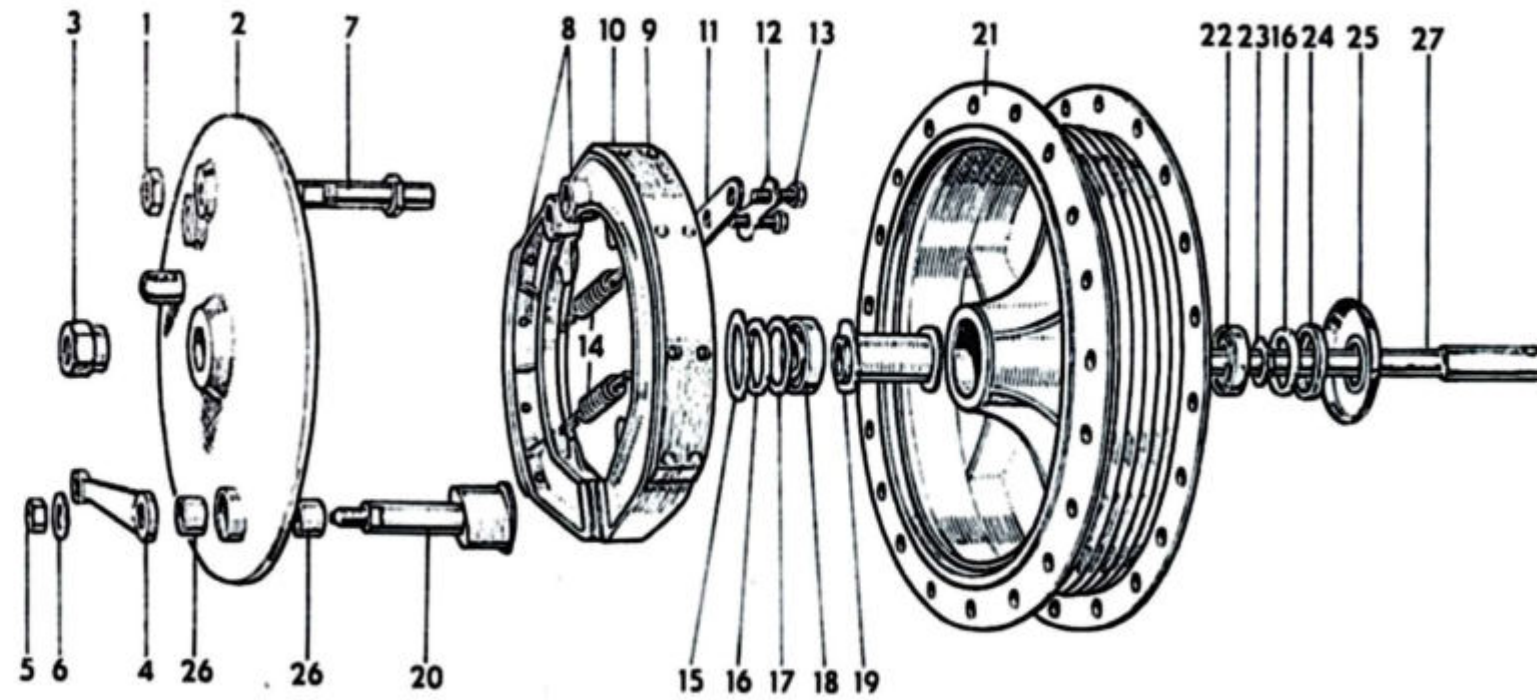


PLATE F

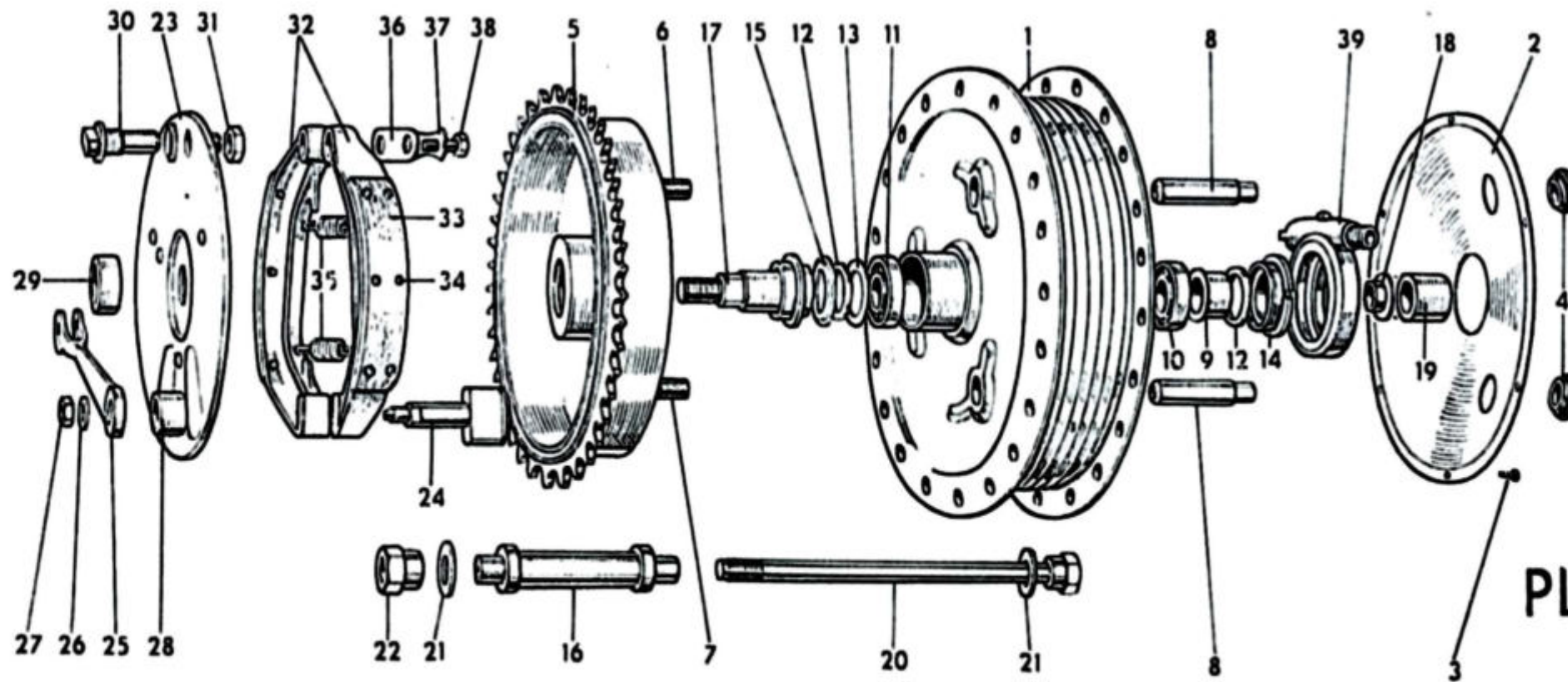


PLATE G

| PLATE No. | PART No. | DESCRIPTION | QTY. | MODEL | PRICE EACH |
|-------------------|-----------|---|------|---------------------------------|------------|
| REAR WHEEL | | | | | |
| — | 24152 | Wheel, complete, with bearing and brake, less tyre | 1 | 88ss and 650ss | |
| — | 24362 | Wheel, complete, with bearing and brake, less tyre | 1 | 650/99 and Atlas | |
| — | 25262 | Wheel, complete, with bearing and brake, less tyre | 1 | G15P (Home) | |
| — | 25294 | Wheel, complete, with bearing and brake, less tyre | 1 | G15P (Export) | |
| — | 25295 | Wheel, complete, with bearing and brake, less tyre | 1 | G15CS | |
| — | M12-2-649 | Wheel, with hub shell only | 1 | 88ss and 650ss | |
| — | 25296 | Wheel, with hub shell only | 1 | 650/99 and Atlas | |
| — | 030521 | Wheel, with hub shell only | 1 | G15P (Home) | |
| — | 25297 | Wheel, with hub shell only | 1 | G15P (Export) | |
| — | 25298 | Wheel, with hub shell only | 1 | G15CS | |
| — | 18350 | Rim only, WM2-19 | 1 | 88ss and 650ss | |
| — | 23319 | Rim, only, WM3-18 | 1 | 650/99, Atlas and G15P (Export) | |
| — | 24872 | Rim, only, WM2-18 | 1 | G15P (Home) | |
| — | 030432 | Rim, only, WM3-18 | 1 | G15CS | |
| — | 20063 | Spoke, long head | 20 | 88ss and 650ss | |
| — | 23331 | Spoke, long head | 20 | 650/99, Atlas & G15P | |
| — | 030433 | Spoke, long head | 20 | G15CS | |
| — | 20061 | Spoke, short head | 20 | 88ss and 650ss | |
| — | 23332 | Spoke, short head | 20 | 650/99, Atlas & G15P | |
| — | 030434 | Spoke, short head | 20 | G15CS | |
| — | 17717 | Nipple, for spoke | 40 | All except G15CS | |
| — | 021694 | Nipple, for spoke | 40 | G15CS | |
| G1 | 19689 | Shell, hub, with liner | 1 | All | |
| G5 | 50245 | Brake drum and sprocket | 1 | 88ss, 650ss, 650/99 and Atlas | |
| G5 | 030052 | Brake drum and sprocket | 1 | All G15 | |
| G8 | 18233 | Nut, sleeve, for brake drum | 3 | All | |
| G10 | 040100 | Bearing, right side | 1 | All | |
| G11 | 17721 | Bearing, left side | 1 | All | |
| G9 | 18234 | Spacer, bearing | 1 | All | |
| G14 | 18232 | Ring, locking bearing | 1 | All | |
| G13 | E6889 | Washer, bearing | 1 | All | |
| G12 | E6885 | Washer, felt | 2 | All | |
| G15 | 19714 | Ring, retaining, felt washer | 1 | All | |
| G16 | 18231 | Sleeve, inner | 1 | All | |
| G17 | E4760 | Stud, retaining brake drum | 1 | All | |
| G2 | 18348 | Diaphragm, hub | 1 | All | |
| G3 | 25100 | Screw, hammer drive | 6 | All | |
| G4 | 18731 | Grommet, diaphragm | 3 | All | |
| G20 | 19265 | Spindle, hub | 1 | 88ss, 650ss, 650/99 and Atlas | |
| G20 | 24882 | Spindle, hub | 1 | All G15 | |
| G21 | 19266 | Washer, hub spindle | 1 | 88ss, 650ss, 650/99 and Atlas | |
| G21 | 030023 | Washer, hub spindle | 1 | All G15 | |
| G22 | 19267 | Nut, hub spindle | 1 | All | |
| G19 | 18235 | Spacer, spindle | 1 | 88ss, 650ss, 650/99 and Atlas | |
| G19 | 030018 | Spacer, spindle | 1 | All G15 | |

| PLATE No. | PART No. | DESCRIPTION | QTY. | MODEL | PRICE EACH |
|------------------------------|----------|---|------|-------------------------------|------------|
| G23 | 19852 | Plate, cover, brake | 1 | 88ss, 650ss, 650/99 and Atlas | |
| G23 | 030015 | Plate, cover, brake | 1 | All G15 | |
| G24 | 50011 | Cam, expander | 1 | All | |
| G32 | 19584 | Shoe, brake, with lining | 2 | All | |
| G33 | 16547 | Lining, brake shoe pair | 1 | All | |
| G34 | E5061 | Rivet, brake shoe lining set | 14 | All | |
| G35 | E5832 | Spring, brake shoe return | 2 | All | |
| G25 | 23436 | Lever, expander | 1 | All | |
| G26 | E5455 | Washer, for lever | 1 | All | |
| G27 | 18942 | Nut, for lever | 1 | All | |
| G36 | 14454 | Plate, retaining pivot pin | 1 | All | |
| G37 | 14506 | Washer, tab, for plate | 1 | All | |
| G38 | 12342 | Bolt, for plate | 2 | All | |
| G29 | 19268 | Spacer, brake plate | 1 | 88ss, 650ss, 650/99 and Atlas | |
| G29 | 030017 | Spacer, brake plate | 1 | All G15 | |
| — | E5276 | Washer, brake plate | A/R | All | |
| BRAKE OPERATING PARTS | | | | | |
| H21 | 19995 | Pedal, rear brake | 1 | 88ss, 650ss, 650/99 and Atlas | |
| H26 | 19929 | Spring, pedal, return | 1 | 88ss, 650ss, 650/99 and Atlas | |
| H27 | 19978 | Nipple, grease and retaining pin | 1 | 88ss, 650ss, 650/99 and Atlas | |
| H22 | 19996 | Spindle, brake pedal | 1 | 88ss, 650ss, 650/99 and Atlas | |
| — | 000008 | Washer, pedal spindle | 1 | 88ss, 650ss, 650/99 and Atlas | |
| H23 | E3227 | Nut, pedal spindle | 1 | 88ss, 650ss, 650/99 and Atlas | |
| H24 | 19997 | Spacer, pedal spindle | 1 | 88ss, 650ss, 650/99 and Atlas | |
| H25 | 19976 | Stop, for pedal | 1 | 88ss, 650ss, 650/99 and Atlas | |
| H28 | 15819A | Rod, rear brake | 1 | 88ss, 650ss, 650/99 and Atlas | |
| H29 | 23439 | Yoke end, brake rod | 1 | 88ss, 650ss, 650/99 and Atlas | |
| H30 | E3255 | Pin, clevis, yoke end | 1 | 88ss, 650ss, 650/99 and Atlas | |
| H31 | 17735 | Pin, split, for clevis pin | 1 | 88ss, 650ss, 650/99 and Atlas | |
| — | 029559 | Pedal, rear brake | 1 | All G15 | |
| — | 021700 | Spring, pedal return | 1 | All G15 | |
| — | 000051 | Nipple, grease | 1 | All G15 | |
| — | 021699 | Spindle, brake pedal | 1 | All G15 | |
| — | 022609 | Bolt, brake pedal | 1 | All G15 | |
| — | 022314 | Stop, brake pedal | 1 | All G15 | |
| — | 022297 | Rod, rear brake | 1 | All G15 | |
| — | 023299 | Yoke end, brake rod | 1 | All G15 | |
| — | 000736 | Pin, clevis, yoke end | 1 | All G15 | |
| — | 000014 | Pin, split, clevis pin | 1 | All G15 | |

| PLATE No. | PART No. | DESCRIPTION | QTY. | MODEL | PRICE EACH |
|--------------------|----------|---|------|-------------------------------|------------|
| — | 18929 | Roller, brake cam lever | 1 | All | |
| H32 | 022743 | Nut, adjusting brake rod | 1 | All | |
| SPEEDOMETER | | | | | |
| — | 029602 | Head, speedometer, only, m.p.h.... | 1 | 88ss and 650ss | |
| — | 030258 | Head, speedometer, only, m.p.h.... | 1 | 650/99, Atlas and G15CS | |
| — | 029603 | Head, speedometer, only, k.p.h. ... | 1 | 88ss and 650ss | |
| — | 030259 | Head, speedometer, only, k.p.h. ... | 1 | 650/99, Atlas and G15CS | |
| — | 029717 | Head, speedometer, only, k.p.h. ... | 1 | G15P | |
| — | 029718 | Head, speedometer, only, k.p.h. ... | 1 | G15P | |
| — | 22888 | Gearbox, speedometer drive | 1 | 88ss, 650ss, 650/99 and Atlas | |
| — | 030207 | Gearbox, speedometer drive | 1 | All G15 | |
| G18 | 13270 | Spacer, speedometer gearbox | 1 | All | |
| — | 25030 | Cable, complete, speedometer drive | 1 | 88ss and 650ss | |
| — | 25087 | Cable, complete, speedometer drive | 1 | 650/99 and Atlas | |
| — | 030444 | Cable, complete, speedometer drive | 1 | All G15 | |
| — | 000178 | Washer, spacing, speedometer head | 1 | G15P | |
| — | 000178 | Washer, spacing, speedometer head | 2 | G15CS | |
| — | 030345 | Lead, speedometer light | 1 | 650/99 and Atlas | |
| HEADLAMP | | | | | |
| — | 59252A | Headlamp, complete, less harness (Home) | 1 | 88ss, 650ss & G15P | |
| — | 59254A | Headlamp, complete, less harness (Europe not France) | 1 | 88ss, 650ss & G15P | |
| — | 59253A | Headlamp, complete, less bulbs and harness (France) | 1 | 88ss, 650ss & G15P | |
| — | 59281A | Headlamp, complete, less harness ... | 1 | 650/99, Atlas and G15CS | |
| — | 553248 | Rim, only | 1 | All | |
| — | 54522365 | Shell, only (Home) | 1 | 88ss, 650ss & G15P | |
| — | 54522377 | Shell, only (Export) | 1 | 88ss, 650ss & G15P | |
| — | 54521617 | Shell, only | 1 | 650/99, Atlas and G15CS | |
| — | 516798 | Light unit (reflector and glass) (Home) ... | 1 | All | |
| — | 553275 | Light unit (reflector and glass) (Europe not France) | 1 | All | |
| — | 516802 | Light unit (reflector and glass) (France)... | 1 | All | |
| — | 554602 | Bulb holder, main (Home and Europe not France) | 1 | All | |
| — | 562303 | Bulb holder, main (France) | 1 | All | |
| — | 552943 | Back shell (France) | 1 | All | |
| — | 144921 | Screw, fixing rim | 1 | All | |
| — | 534296 | Plate, fixing rim | 1 | All | |
| — | 554710 | Bulb holder, pilot | 1 | All | |
| — | 34289A | Switch, lighting | 1 | All | |
| — | 54330934 | Knob, lighting switch | 1 | All | |
| — | 54934995 | Harness, main (Home) | 1 | 88ss, 650ss & G15P | |
| — | 54932248 | Harness, main (Export) | 1 | 88ss, 650ss & G15P | |
| — | 54935175 | Harness, main | 1 | 650/99 and Atlas | |
| — | 54935167 | Harness, main | 1 | G15CS | |
| — | 54930007 | Socket, with cables | 1 | 88ss, 650ss & G15P | |

| PLATE No. | PART No. | DESCRIPTION | QTY. | MODEL | PRICE EACH |
|-------------------|----------|--|------|-------------------------------|------------|
| — | 36296A | Ammeter | 1 | All | |
| — | 112201 | Bolt, fixing headlamp | 2 | All | |
| — | 030057 | Spacer, headlamp bolt | 2 | 88ss, 650ss & G15P | |
| — | 030058 | Spacer, headlamp bolt | 2 | 650/99, Atlas and G15CS | |
| — | 446 | Bulb, main, 12v., 50 × 40w. (Home) ... | 1 | All P. Tax 1/- | |
| — | 370 | Bulb, main, 12v., 45 × 40w. (Europe except France) | 1 | All P. Tax 1/2 | |
| — | 350 | Bulb, main, 12v., 35 × 35w. (Europe except France) | 1 | All P. Tax 1/2 | |
| — | 989 | Bulb, pilot, 12v., 6w. | 1 | All P. Tax 4d. | |
| REAR LAMP | | | | | |
| — | 53454B | Lamp, complete (Lucas 564) (Home and Export not U.S.A.) | 1 | 88ss, 650ss | |
| — | 53973A/B | Lamp, complete (Lucas 679) (U.S.A.) ... | 1 | 88ss, 650ss | |
| — | 53973A/B | Lamp, complete (Lucas 679) | 1 | 650/99, Atlas and all G15 | |
| — | 54576001 | Lens, red (for Lucas 564) | 1 | 88ss and 650ss | |
| — | 54572932 | Lens, red (for Lucas 679) | 1 | All | |
| — | 575219 | Nut, for lens (for Lucas 564) | 2 | 88ss and 650ss | |
| — | 572289 | Screw, for lens (for Lucas 679) | 2 | All | |
| — | 575208 | Gasket, lens seating (for Lucas 564) (Home) | 1 | 88ss and 650ss | |
| — | 54571677 | Gasket, seating lamp (for Lucas 679) ... | 1 | All | |
| — | 575207 | Grommet, bulb holder (for Lucas 564) (Home) | 1 | 88ss and 650ss | |
| — | 57574348 | Bulb holder, with reflector (for Lucas 679) | 1 | All | |
| — | 575209 | Bulb holder (for Lucas 564) (Home) ... | 1 | 88ss and 650ss | |
| — | 573825 | Grommet, cable entry (for Lucas 564) (Home) | 1 | 88ss and 650ss | |
| — | 380 | Bulb, 12v., 216 × w. | 1 | All P. Tax 8d. | |
| HORN | | | | | |
| — | 030045 | Horn, electric (Lucas 8H 70159 B/D) ... | 1 | All | |
| — | 23389 | Screw, fixing horn | 2 | All | |
| — | 23410 | Washer, fixing screw | 2 | All | |
| — | E3221 | Nut, fixing screw | 2 | All | |
| — | 000342 | Bolt, fixing horn | 2 | All | |
| — | 000012 | Washer, fixing bolt | 2 | All | |
| — | 000005 | Nut, fixing bolt | 2 | All | |
| — | 030044 | Bracket, for horn | 1 | All G15 only | |
| STOP LIGHT | | | | | |
| — | 029965 | Kit, complete, stop light | 1 | All G15 | |
| — | 029351 | Switch, stop light (Lucas 31383 A/B) ... | 1 | All | |
| — | 22568 | Bracket, stop switch | 1 | 88ss, 650ss, 650/99 and Atlas | |
| — | 22807 | Bolt, switch bracket | 1 | 88ss, 650ss, 650/99 and Atlas | |
| — | 000010 | Washer, switch bolt | 2 | 88ss, 650ss, 650/99 and Atlas | |
| — | E3224A | Nut, switch bolt | 1 | 88ss, 650ss, 650/99 and Atlas | |

| PLATE No. | PART No. | DESCRIPTION | QTY. | MODEL | PRICE EACH |
|----------------------------------|----------|--|------|-------------------------------|------------|
| — | E5278 | Pin, fixing | 2 | 88ss, 650ss, 650/99 and Atlas | |
| — | 17904 | Washer, fixing pin | 4 | 88ss, 650ss, 650/99 and Atlas | |
| — | E3221 | Nut, fixing pin | 2 | 88ss, 650ss, 650/99 and Atlas | |
| — | 029831 | Screw, fixing switch | 2 | All G15 | |
| — | 000039 | Washer, fixing screw | 2 | All G15 | |
| — | 20245 | Lead, stop tail lamp | 1 | 88ss, 650ss, 650/99 and Atlas | |
| — | 20248 | Lead, brake switch | 1 | 88ss and 650ss | |
| — | 028250 | Cable, stop light | 1 | All G15 | |
| — | 021595 | Bolt, in brake pedal for stop light | 1 | All G15 | |
| — | 029245 | Nut, for brake pedal bolt | 1 | All G15 | |
| — | 25228 | Lead, brake switch | 1 | 650/99 and Atlas | |
| ALTERNATOR | | | | | |
| — | 54021027 | Alternator, rotor and stator | 1 | All | |
| — | 47162A | Stator, only | 1 | All | |
| — | 54213901 | Rotor, only | 1 | All | |
| — | 21433 | Stud, for stator | 3 | 88ss, 650ss, 650/99 and Atlas | |
| — | 17698 | Washer, for stud | 3 | 88ss, 650ss, 650/99 and Atlas | |
| — | E3229 | Nut, for stud | 3 | 88ss, 650ss, 650/99 and Atlas | |
| A74 | 20948 | Key, for rotor | 1 | All | |
| — | 19147 | Washer, for rotor | 1 | 88ss, 650ss, 650/99 and Atlas | |
| — | 20692 | Nut, for rotor | 1 | 88ss, 650ss, 650/99 and Atlas | |
| — | 23738 | Spacer, for rotor | 1 | 88ss, 650ss, 650/99 and Atlas | |
| — | 011826 | Stud, for stator | 3 | All G15 | |
| — | 000012 | Washer, for stud | 3 | All G15 | |
| — | 011843 | Nut, for stud | 3 | All G15 | |
| — | 24948 | Washer, for rotor | 1 | All G15 | |
| — | 24947 | Nut, for rotor | 1 | All G15 | |
| — | 030251 | Spacer, for rotor | 1 | All G15 | |
| BATTERY | | | | | |
| — | MKZ9E | Battery, with lid (charged but dry) | 2 | All | |
| — | 030351 | Link, for batteries | 1 | All | |
| — | 000348 | Bolt, battery-earth | 1 | All | |
| — | 000012 | Washer, for bolt | 1 | All | |
| RECTIFIER AND ZENER DIODE | | | | | |
| — | 49072A | Rectifier (with nut) | 1 | All | |
| — | 000011 | Washer, rectifier | 1 | 88ss, 650ss, 650/99 and Atlas | |
| — | 17698 | Washer, rectifier | 1 | 88ss, 650ss, 650/99 and Atlas | |

| PLATE No. | PART No. | DESCRIPTION | QTY. | MODEL | PRICE EACH |
|----------------------------|----------|---|------|--------------------------------|------------|
| — | 015306 | Washer, rectifier | 2 | All G15 | |
| — | 49345A | Diode, Zener | 1 | All | |
| — | 026656 | Bracket, for diode | 1 | 88ss, 650ss, 650/99 and Atlas | |
| — | 030042 | Plate, heat sink, for diode | 2 | All | |
| — | 030043 | Spacer, for plate | 1 | All | |
| — | 000362 | Bolt, for diode | 1 | 88ss, 650ss, 650/99 and Atlas | |
| — | 014119 | Washer, for diode (on tank bolt) ... | 1 | 88ss, 650ss, 650/99 and Atlas | |
| — | 014779 | Washer, diode bolt | 1 | 88ss, 650ss, 650/99 and Atlas | |
| — | 000004 | Nut, diode bolt | 1 | 88ss, 650ss, 650/99 and Atlas | |
| — | 042554 | Bolt, fixing diode | 1 | All G15 | |
| — | 014515 | Spacer, diode bolt | 1 | All G15 | |
| — | 000011 | Washer, diode bolt | 1 | All G15 | |
| ELECTRICAL SUNDRIES | | | | | |
| — | 31563D | Switch, horn and dipping | 1 | All | |
| — | 380459 | Packing, rubber, for switch | 1 | All | |
| — | 021299 | Screw, for switch | 2 | All | |
| — | 762040 | Switch, magneto cut-out | 1 | All | |
| — | 369218 | Cable, for horn | R | All | |
| — | 369218 | Cable, for cut-out switch | R | All | |
| — | 000543 | Cable, H.T. sparking plug | R | All | foot |
| — | 000541 | Terminal, H.T. cable | R | All | |
| — | FE100 | Plug, sparking | R | 88ss, 650ss & 650/99 | |
| — | FE75 | Plug, sparking | R | Atlas and all G15 | |
| — | 18465 | Cover, sparking plug (with suppressor)... | R | 88ss, 650ss and G15P (Home) | |
| — | 15399 | Cover, sparking plug | R | G15P (Export), Atlas and G15CS | |
| TOOLS | | | | | |
| — | 017253 | Bag, for tools | 1 | All | |
| — | 021625 | Screwdriver | 1 | All | |
| — | 017052 | Spanner, $\frac{1}{4}" \times \frac{3}{8}"$ | 1 | All | |
| — | 017248 | Pliers, sidecutting | 1 | All | |
| — | LTU/07 | Lever, tyre | 2 | All | |
| — | SBU2/88 | Spanner, sparking plug | 1 | All | |
| — | SBU2/76 | Spanner, box, $\frac{7}{8}" \times \frac{1}{2}"$ | 1 | All | |
| — | G30459 | Bar, tommy, $\frac{7}{8}"$ diameter | 1 | All | |
| — | SPU2/20 | Spanner, rocker adjuster | 1 | All | |
| — | 017053 | Spanner, $\frac{5}{8}" \times \frac{3}{8}"$ | 1 | All | |
| — | SBU1/183 | Spanner, box, wheel nut | 1 | All | |
| — | 023284 | Spanner, shock absorber unit | 1 | All | |
| — | 015023 | Spanner, magneto | 1 | All | |
| — | SBU1/74 | Spanner, cylinder head | 1 | All | |
| — | SBU1/02 | Spanner, cylinder head | 1 | All | |
| — | 19438 | Key, Allen, handlebar clip | 1 | All G15 only | |
| — | 017257 | Spanner, $\frac{1}{8}" \times \frac{3}{8}"$ | 1 | All G15 only | |
| — | 017254 | Spanner, dynamo and clutch adjustment | 1 | All G15 only | |

| PLATE No. | PART No. | DESCRIPTION | QTY. | MODEL | PRICE EACH |
|------------------------|----------|---|------|-------------------------------|------------|
| — | TBU/01 | Bar, tommy, $\frac{7}{8}$ " diameter | 1 | 88ss, 650ss, 650/99 and Atlas | |
| — | 019869 | Key, Allen | 1 | 88ss, 650ss, 650/99 and Atlas | |
| — | SPU1/01 | Spanner, cable adjuster | 1 | 650/99 and Atlas | |
| TOOL KITS | | | | | |
| — | 017114 | Inflator, tyre | 1 | All | |
| — | 25299 | Kit of tools, complete, less inflator ... | 1 | 88ss and 650ss | |
| — | 25307 | Kit of tools, complete, less inflator ... | 1 | 650/99 and Atlas | |
| — | 25308 | Kit of tools, complete, less inflator ... | 1 | All G15 | |
| GASKET SET | | | | | |
| — | 25284 | Set of decarbonising gaskets | 1 | 88ss, 650ss & 650/99 | |
| — | 25285 | Set of decarbonising gaskets | 1 | Atlas | |
| — | 25286 | Set of decarbonising gaskets | 1 | All G15 | |
| — | 25287 | Set, complete overhaul gaskets | 1 | 88ss, 650ss & 650/99 | |
| — | 25288 | Set, complete overhaul gaskets | 1 | Atlas | |
| — | 25289 | Set, complete overhaul gaskets | 1 | All G15 | |
| CRASHBAR, FRONT | | | | | |
| — | 25280 | Set, crashbar, front complete | 1 | 88ss and 650ss | |
| — | 026855 | Set, crashbar, front complete | 1 | All G15 | |
| — | 25011 | Bar, only, assembled | 1 | 88ss and 650ss | |
| — | 20610 | Plate, top fixing | 1 | 88ss and 650ss | |
| — | 25012 | Stud, fixing, top | 1 | 88ss and 650ss | |
| — | 000010 | Washer, top fixing stud | 1 | 88ss and 650ss | |
| — | E3224 | Nut, top fixing stud | 1 | 88ss and 650ss | |
| — | 026519 | Bar, only, assembled | 1 | All G15 | |
| — | 026523 | Stud, frame uniting | 1 | All G15 | |
| — | 010957 | Bolt, top fixing | 1 | All G15 | |
| — | 026525 | Spacer, top bolt | 2 | All G15 | |
| — | 000009 | Washer, top bolt | 2 | All G15 | |
| — | 000002 | Nut, top bolt | 1 | All G15 | |
| — | 029852 | Stay, exhaust pipe | 2 | All G15 | |
| CRASHBAR, REAR | | | | | |
| — | RCBK/10R | Set crashbar rear, complete | 1 | 88ss and 650ss | |
| — | 030606 | Set, crashbar rear, complete | 1 | All G15 | |
| — | 23016 | Bar, only, left | 1 | 88ss and 650ss | |
| — | 23017 | Bar, only, right | 1 | 88ss and 650ss | |
| — | 23114A | Stud, fixing, top | 1 | 88ss and 650ss | |
| — | 23019 | Spacer, crashbar | 2 | 88ss and 650ss | |
| — | 23018 | Stud, crashbar and pillion rest | 2 | 88ss and 650ss | |
| — | 029946 | Bar, only, assembled, left | 1 | All G15 | |
| — | 029947 | Bar, only, assembled, right | 1 | All G15 | |
| — | 029950 | Rear, footrest | 2 | All G15 | |
| — | 042269 | Bolt, footrest | 2 | All G15 | |
| — | 000011 | Washer, for bolt | 2 | All G15 | |
| — | 029952 | Rubber, footrest | 2 | All G15 | |

| PLATE No. | PART No. | DESCRIPTION | QTY. | MODEL | PRICE EACH |
|--------------------------------|----------|--|------|-------------------------------|------------|
| STEERING DAMPER | | | | | |
| — | 030331 | Steering, damper, set of parts | 1 | All | |
| — | 017260 | Knob, adjusting | 1 | All | |
| — | 030323 | Sleeve, assembly | 1 | All | |
| — | 000195 | Washer, spring, damper knob | 1 | All | |
| — | 000162 | Washer, ratchet, damper knob | 1 | All | |
| — | 019559 | Plate, anchor | 1 | All | |
| — | 014577 | Bolt, anchor plate | 1 | All | |
| — | 000012 | Washer, anchor plate bolt | 3 | All | |
| — | 000191 | Washer, spring, for bolt | 2 | All | |
| — | 000812 | Disc, friction | 2 | All | |
| — | 030326 | Stud, draw | 1 | All | |
| — | 030327 | Spacer, draw stud | 1 | All | |
| — | 000342 | Bolt, friction plate | 1 | All | |
| — | 019780 | Spacer, for bolt | 1 | All | |
| — | 030333 | Nut, top fork stem | 1 | All | |
| SIDECAR FORK CONVERSION | | | | | |
| — | 030340 | Crown, assembly, with stem | 1 | 88ss, 650ss, 650/99 and Atlas | |
| — | 030402 | Lug, handlebar | 1 | 88ss, 650ss, 650/99 and Atlas | |
| — | 15906A | Spring, main, front fork | 2 | 88ss, 650ss, 650/99 and Atlas | |
| — | 22811 | Unit, rear suspension | 2 | 88ss, 650ss, 650/99 and Atlas | |
| — | T2180A | Sprocket, engine, 17 tooth | 1 | 88ss | |
| — | T2180C | Sprocket, engine, 19 tooth | 1 | 650ss, 650/99 & Atlas | |
| — | 030331 | Set of steering damper parts | 1 | 88ss, 650ss, 650/99 and Atlas | |
| REVOLUTION COUNTER | | | | | |
| — | 030391 | Head, only, revolution counter | 1 | 88ss, 650ss, 650/99 and Atlas | |
| — | 030392 | Cable, assembled | 1 | 88ss, 650ss, 650/99 and Atlas | |
| — | 14490 | Clip, for cable | 1 | 88ss, 650ss, 650/99 and Atlas | |
| — | 030384 | Bracket, for head | 1 | 88ss and 650ss | |
| — | 030358 | Bracket, for head | 1 | 650/99 and Atlas | |
| — | 24563 | Gearbox, revolution counter | 1 | 88ss, 650ss, 650/99 and Atlas | |
| — | 23565 | Gasket, for gearbox | 1 | 88ss, 650ss, 650/99 and Atlas | |
| — | 030364 | Lead, for light | 1 | 88ss and 650ss | |
| — | 030435 | Lead, for light | 1 | 650/99 and Atlas | |
| — | 23453 | Cover, blanking, gearbox | 1 | All | |
| — | 23649 | Disc, sealing, for cover | 1 | All | |
| — | 030383 | Plate, assembled, speedometer and light switch | 1 | All | |
| — | 23444 | Screw, for revolution counter gearbox or blanking cover | 2 | All | |
| — | 23446 | Washer, fibre, for screw | 2 | All | |
| — | 23447 | Washer, metal, for screw | 2 | All | |

| PLATE No. | PART No. | DESCRIPTION | QTY. | MODEL | PRICE EACH |
|-------------------------------------|----------|---|------|----------------------|------------|
| — | 23445 | Nut, for screw | 2 | All | |
| AIR CLEANER | | | | | |
| — | 030337 | Cleaner, air | 1 | All | |
| — | 23559 | Grommet, air cleaner | 2 | All | |
| — | 23552 | Plate, mounting | 1 | 88ss, 650ss & 650/99 | |
| — | 24572 | Plate, mounting | 1 | All 750 | |
| — | 23555 | Sleeve, mounting plate | 2 | 88ss, 650ss & 650/99 | |
| — | 24571 | Sleeve, mounting plate | 2 | All 750 | |
| — | 22034 | Bolt, mounting plate | 2 | All | |
| — | 17698 | Washer, mounting plate bolt | 2 | All | |
| OPTIONAL PARTS | | | | | |
| — | 24985B | Mudguard, front, black | 1 | 88ss and 650ss | |
| — | 25060A | Mudguard, rear, black | 1 | 88ss and 650ss | |
| — | 23679 | Handrail, pillion seat | 2 | 650/99 and Atlas | |
| — | 22572 | Stud, fixing handrail | 2 | 650/99 and Atlas | |
| — | 20676 | Rim, front, light alloy | 1 | 88ss and 650ss | |
| — | 23842 | Rim, rear, light alloy | 1 | 88ss and 650ss | |
| — | 22971 | Seat, single | 1 | 88ss and 650ss | |
| — | 21183 | Clip, spring, single seat | 2 | 88ss and 650ss | |
| — | 14468 | Bolt, single seat clip | 2 | 88ss and 650ss | |
| — | 040434 | Kickstart, folding type | 1 | 88ss and 650ss | |
| RACING FOOTCHANGE CONVERSION | | | | | |
| — | 23772 | Lever, gear change | 1 | 88ss and 650ss | |
| — | 23774 | Lever, toggle | 1 | 88ss and 650ss | |
| — | 18450 | Rubber, gear change lever | 1 | 88ss and 650ss | |
| — | 15879 | Rod, toggle | 1 | 88ss and 650ss | |
| — | 17356 | Yoke end, small | 1 | 88ss and 650ss | |
| — | 15880 | Yoke end, large | 1 | 88ss and 650ss | |
| — | E3231 | Nut, lock, yoke end | 2 | 88ss and 650ss | |
| — | 15882 | Pin, clevis, yoke end | 2 | 88ss and 650ss | |
| — | 10057 | Washer, clevis pin | 2 | 88ss and 650ss | |
| — | 18415 | Pin, split, clevis pin | 2 | 88ss and 650ss | |
| — | 16386A | Pedal, rear brake | 1 | 88ss and 650ss | |
| — | 23773 | Stop, adjuster | 1 | 88ss and 650ss | |
| — | E5456 | Washer, for stop | 1 | 88ss and 650ss | |
| — | E3223 | Nut, for stop | 1 | 88ss and 650ss | |
| — | 13421 | Screw, pedal adjuster | 1 | 88ss and 650ss | |
| — | E3229 | Nut, adjuster screw | 1 | 88ss and 650ss | |
| — | 15870 | Footrest, left hand | 1 | 88ss and 650ss | |
| — | 17162 | Footrest, right hand (folding) | 1 | 88ss and 650ss | |
| — | 15871B | Stud, footrest support, left hand | 1 | 88ss and 650ss | |
| — | 17163 | Stud, footrest support, right hand | 1 | 88ss and 650ss | |
| — | E5377 | Washer, for stud | 2 | 88ss and 650ss | |
| — | 15176 | Nut, for stud | 2 | 88ss and 650ss | |
| — | 000008 | Washer, for stud, left hand | 1 | 88ss and 650ss | |
| — | E6706 | Bolt, for right hand footrest | 1 | 88ss and 650ss | |
| — | 12079 | Nut, for bolt | 1 | 88ss and 650ss | |